



AGENDA

**REGULAR MEETING OF THE BOARD OF DIRECTORS
LA PUENTE VALLEY COUNTY WATER DISTRICT
112 N. FIRST STREET, LA PUENTE, CALIFORNIA
MONDAY, MAY 10, 2021 AT 5:30 PM**

TELECONFERENCE ACCESS: Pursuant to Executive Order N-29-20 issued by Governor Newsom in response to the COVID-19 pandemic as a precaution to protect staff, our constituents, and elected officials, the La Puente Valley County Water District will hold its Board meeting via teleconference or the most rapid means of communication available at the time.

WEBSITE: WWW.ZOOM.COM

MEETING ID: 822 6346 9072

DIRECT MEETING LINK:

[HTTPS://US02WEB.ZOOM.US/J/82263469072](https://us02web.zoom.us/j/82263469072)

JOIN BY PHONE

PHONE NUMBER: (669) 900-9128

ACCESS CODE: 822 6346 9072#

1. CALL TO ORDER

2. PLEDGE OF ALLEGIANCE

3. ROLL CALL OF BOARD OF DIRECTORS

President Rojas____ Vice President Barajas____ Director Argudo____

Director Escalera____ Director Hernandez____

4. PUBLIC COMMENT

Anyone wishing to discuss items on the agenda or pertaining to the District may do so now. The Board may allow additional input during the meeting. A five-minute limit on remarks is requested.

5. ADOPTION OF AGENDA

Each item on the Agenda shall be deemed to include an appropriate motion, resolution or ordinance to take action on any item. Materials related to an item on this agenda submitted after distribution of the agenda packet are available for public review at the District office, located at the address listed above.

6. APPROVAL OF CONSENT CALENDAR

There will be no separate discussion of Consent Calendar items as they are considered to be routine by the Board of Directors and will be adopted by one motion. If a member of the Board, staff, or public requests discussion on a particular item, that item will be removed from the Consent Calendar and considered separately.

- A. Approval of Minutes of the Regular Meeting of the Board of Directors held on April 26, 2021.

- B. Approval of District's Expenses for the Month of April 2021.
- C. Approval of City of Industry Waterworks System Expenses for the Month of April 2021.
- D. Receive and File the District's Water Sales Report for April 2021.
- E. Receive and File the City of Industry Waterworks System's Water Sales Report for April 2021.

7. ACTION / DISCUSSION ITEMS

- A. Consideration to Approve New Office Ad Hoc Committee
Recommendation: Board Approval of Proposed Ad Hoc Committee on New Office
- B. Discussion Regarding the District's Recycled Water Project
Recommendation: Board Discretion
- C. Consideration to Approve the District's Standard Drawings for Potable and Recycled Water
Recommendation: Board Approval of the District' Standard Drawings for Potable and Recycled Water and Authorize the District's General Manager to Update the District's Standard Drawings as Needed.

8. GENERAL MANAGER'S REPORT

9. OTHER ITEMS

- A. Upcoming Events.
- B. Information Items.

10. ATTORNEY'S COMMENTS

11. CLOSED SESSION

- A. Conference with legal counsel – anticipated litigation
Initiation of litigation pursuant to paragraph (4) of subdivision (d) of government code section 54956.9. One case.
- B. Public Employee Performance Evaluation.
Position: General Manager

12. CLOSED SESSION REPORT

13. ADDITIONAL ACTION/DISCUSSION ITEM

- Consideration of Compensation Adjustment for the District's General Manager.
Recommendation: Board Discretion.

14. BOARD MEMBER COMMENTS

- A. Report on Events Attended.
- B. Other Comments.

15. FUTURE AGENDA ITEMS

16. ADJOURNMENT

POSTED: Friday, May 7, 2021

President William R. Rojas, Presiding.

Any qualified person with a disability may request a disability-related accommodation as needed to participate fully in this public meeting. In order to make such a request, please contact Mr. Roy Frausto, Board Secretary, at (626) 330-2126 in sufficient time prior to the meeting to make the necessary arrangements.

Note: Agenda materials are available for public inspection at the District office or visit the District's website at www.lapuentewater.com.



**MINUTES OF THE REGULAR MEETING OF
THE BOARD OF DIRECTORS OF THE
LA PUENTE VALLEY COUNTY WATER DISTRICT
FOR MONDAY, APRIL 26, 2021 AT 5:30 PM**

1. CALL TO ORDER

President Rojas called the meeting to order at 5:30 p.m.

2. PLEDGE OF ALLEGIANCE

President Rojas led the meeting in the Pledge of Allegiance.

3. ROLL CALL OF THE BOARD OF DIRECTORS

President Rojas	Vice President Barajas	Director Argudo	Director Escalera	Director Hernandez
Present Via Teleconference	Present Via Teleconference	Present Via Teleconference	Present Via Teleconference	Present Via Teleconference

OTHERS PRESENT

Staff and Counsel: General Manager & Board Secretary, Roy Frausto; Office Manager, Gina Herrera; Customer Service and Accounting Clerk, Vanessa Koyama; Operations & Maintenance Superintendent, Paul Zampiello; Water Treatment & Supply Supervisor, Cesar Ortiz and District Counsel, Jim Ciampa all present via teleconference.

Public: No members of the public were present.

4. PUBLIC COMMENTS

No comments from the Public.

5. ADOPTION OF AGENDA

Motion: Adopt Agenda as Presented.

1st: President Rojas

2nd: Director Argudo

	Rojas	Barajas	Argudo	Escalera	Hernandez
Vote	Yes	Yes	Yes	Yes	Yes

Motion carried by a vote of: 5 Yes, 0 No, 0 Abstain, 0 Absent.

6. APPROVAL OF CONSENT CALENDAR

Motion: Approve Consent Calendar as Presented.

1st: President Rojas

2nd: Director Hernandez

	Rojas	Barajas	Argudo	Escalera	Hernandez
Vote	Yes	Yes	Yes	Yes	Yes

Motion carried by a vote of: 5 Yes, 0 No, 0 Abstain, 0 Absent.

7. FINANCIAL REPORTS

A. Summary of the District's and IPU's Cash and Investments as of March 31, 2021.

Mr. Frausto provided a summary of the balances in each account provided in the Summary of Cash and Investments as of March 31, 2021.

Motion: Receive and File the Summary of Cash and Investments as of March 31, 2021.

1st: Director Escalera

2nd: Director Argudo

	Rojas	Barajas	Argudo	Escalera	Hernandez
Vote	Yes	Yes	Yes	Yes	Yes

Motion carried by a vote of: 5 Yes, 0 No, 0 Abstain, 0 Absent.

B. Statement of District's Revenue and Expenses as of March 31, 2021.

Mrs. Herrera provided a summary of the Statement of Revenues and Expenses for the District as of March 31, 2021.

Motion: Receive and File the Statement of the District's Revenue and Expenses as of March 31, 2021.

1st: President Rojas

2nd: Director Escalera

	Rojas	Barajas	Argudo	Escalera	Hernandez
Vote	Yes	Yes	Yes	Yes	Yes

Motion carried by a vote of: 5 Yes, 0 No, 0 Abstain, 0 Absent.

C. Statement of the Industry Public Utilities' Water Operations Revenue and Expenses as of March 31, 2021.

Mrs. Herrera provided a summary of the Statement of Revenues and Expenses for the Industry Public Utilities' Water Operations.

Motion: Receive and File the Statement of the Industry Public Utilities Water Operations' Revenue and Expenses as of March 31, 2021.

1st: President Rojas

2nd: Director Hernandez

	Rojas	Barajas	Argudo	Escalera	Hernandez
Vote	Yes	Yes	Yes	Yes	Yes

Motion carried by a vote of: 5 Yes, 0 No, 0 Abstain, 0 Absent.

8. ACTION / DISCUSSION ITEMS

A. Consideration of Lease of 335.39 AF of Main San Gabriel Basin Water Production Rights from Mary K. Dawes (Partridge).

Mr. Frausto summarized his staff report on the annual lease of water rights for fiscal year 2021-22 with Mary K. Dawes (Partridge).

Motion: Authorize the General Manager to Lease 335.89 Acre-Feet of Main San Gabriel Basin Water Production Rights from Mary K. Dawes (Partridge) for the amount of \$268,580.31.

1st: President Rojas

2nd: Director Escalera

	Rojas	Barajas	Argudo	Escalera	Hernandez
Vote	Yes	Yes	Yes	Yes	Yes

Motion carried by a vote of: 5 Yes, 0 No, 0 Abstain, 0 Absent.

B. Discussion of the Potential Main Street Field Office.

Mr. Frausto reviewed the conceptual plans for the Main Street Reservoir Field Office. He showed the Board aerial views of the site and the preliminary cost estimate of the project. Mr. Frausto also discussed the lease years remaining of the Main Street Office and the retrofit costs as another option for a potential office.

9. OPERATIONS AND MAINTENANCE SUPERINTENDENTS’S REPORT

Mr. Zampietro gave an overview of the report he provided in the Board Packet.

Motion: Receive and File the Operations and Maintenance Superintendent’s Report.

1st: President Rojas

2nd: Director Argudo

	Rojas	Barajas	Argudo	Escalera	Hernandez
Vote	Yes	Yes	Yes	Yes	Yes

Motion carried by a vote of: 5 Yes, 0 No, 0 Abstain, 0 Absent.

10. GENERAL MANAGER’S REPORT

Mr. Frausto stated that he had no report.

11. OTHER ITEMS

A. Information Items.

Included in Board Packet.

12. ATTORNEY’S COMMENTS

Mr. Ciampa updated the Board on the BKK landfill issue.

13. CLOSED SESSION 6:03 p.m.

A. Conference with legal counsel – anticipated litigation

Initiation of litigation pursuant to paragraph (4) of subdivision (d) of government code section 54956.9. One case.

14. CLOSED SESSION REPORT 6:23 p.m.

Board met in closed session and the Board was briefed on the facts and circumstances of the matter and no reportable action was taken.

15. BOARD MEMBERS COMMENTS

A. Report on Events Attended.

None

B. Other Comments.

None

16. FUTURE AGENDA ITEMS

None

17. ADJOURNMENT

President Rojas adjourned the meeting at 6:23 p.m.

Attest:

William R. Rojas, President

Roy Frausto, Secretary

La Puente Water District April 2021 Disbursements

Check #	Payee	Amount	Description
8704	Eurofins Eaton Analytical Inc	\$ 40.00	Water Sampling
8705	Highroad IT	\$ 823.77	Technical Support & Software
8706	Merritt's Hardware	\$ 377.13	Field Supplies
8707	Peck Road Gravel	\$ 280.00	Asphalt & Concrete Disposal
8708	SC Edison	\$ 6,559.04	Power Expense
8709	SoCal SCADA Solutions LLC	\$ 18,917.00	SCADA Software Upgrade
8710	Sunbelt Rentals	\$ 723.73	Equipment Rental
8711	Weck Laboratories Inc	\$ 178.00	Water Sampling
8712	Western Water Works	\$ 4,708.99	Field Supplies - Inventory
8713	SC Edison	\$ 19,202.02	Power Expense
8714	Waste Management of SG Valley	\$ 219.50	Trash Service
8715	Red Wing Shoes	\$ 350.00	Boot Allowance
8716	Resource Building Materials	\$ 5.67	Field Supplies
8717	Petty Cash	\$ 21.40	Office/Field Expense
8718	Eurofins Eaton Analytical Inc	\$ 220.00	Water Sampling
8719	Evoqua	\$ 5,333.92	Resin Disposal
8720	Hach Company	\$ 1,300.21	Field Supplies - Compliance
8721	Hopkins Technical Products	\$ 325.25	Field Supplies - Compliance
8722	Northstar Chemical	\$ 9,840.83	Chemicals Expense
8723	S & J Supply Co Inc	\$ 361.62	Field Supplies
8724	Sierra Instruments	\$ 671.20	VOC Expense
8725	Weck Laboratories Inc	\$ 2,783.25	Water Sampling
8726	Weck Laboratories Inc	\$ 1,417.75	Water Sampling
8727	Answering Service Care	\$ 172.86	Answering Service
8728	CCSInteractive	\$ 54.40	Monthly Web Hosting
8729	Chevron	\$ 2,364.43	Truck Fuel
8730	Coverall North America Inc	\$ 255.00	Cleaning Service
8731	Eurofins Eaton Analytical Inc	\$ 40.00	Water Sampling
8732	Fedak & Brown LLP	\$ 7,119.00	Audit Services
8733	Grainger Inc	\$ 13.16	Field Supplies
8734	Highroad IT	\$ 804.00	Technical Support
8735	Peck Road Gravel	\$ 210.00	Asphalt & Concrete Disposal
8736	Public Water Agencies Group	\$ 1,453.25	Emergency Preparedness Program
8737	Registrar-Recorder	\$ 22,939.98	Election Fee's
8738	Stamp Fulfillment Services	\$ 335.90	Office Supplies
8739	State Water Resources Control Board	\$ 90.00	Certification Renewal
8740	Superior Laundry - Laundry Up	\$ 432.25	Uniform Maintenance
8741	Underground Service Alert	\$ 223.74	Line Notifications
8742	Valley Vista Services	\$ 333.88	Trash Service
8743	Weck Laboratories Inc	\$ 134.00	Water Sampling
8744	ACWA/JPIA	\$ 5,264.91	Worker's Compensation Program
8745	County Sanitation Dists of LA County	\$ 57.50	Refuse Fee's
8746	Eide Bailly LLP	\$ 4,194.32	Administrative Support

La Puente Water District April 2021 Disbursements - continued

Check #	Payee	Amount	Description
8747	Eurofins Eaton Analytical Inc	\$ 40.00	Water Sampling
8748	Ferguson Waterworks	\$ 3,482.00	Meter Expense
8749	Highroad IT	\$ 2,872.00	Annual License Renewals
8750	InfoSend	\$ 937.75	Billing Expense
8751	Peck Road Gravel	\$ 280.00	Asphalt & Concrete Disposal
8752	Time Warner Cable	\$ 287.75	Telephone Service
8753	Time Warner Cable	\$ 691.45	Telephone Service
8754	Citi Cards	\$ 3,109.27	Equipment Maintenance
8755	Civiltec Engineering Inc	\$ 650.00	Engineering Services
8756	Eurofins Eaton Analytical Inc	\$ 40.00	Water Sampling
8757	Grainger Inc	\$ 47.99	Field Supplies
8758	Jack Henry & Associates	\$ 52.25	Web E-Check Fee's
8759	Jiffy Lube My Fleet Center	\$ 123.56	Truck Maintenance
8760	Lagerlof LLP	\$ 3,209.00	Attorney Fee's
8761	Lincoln National Life Insurance Company	\$ 685.50	Disability Insurance
8762	Peck Road Gravel	\$ 140.00	Asphalt & Concrete Disposal
8763	Premier Access Insurance Co	\$ 2,874.55	Dental Insurance
8764	S & J Supply Co Inc	\$ 2,819.52	Field Supplies - Inventory
8765	San Gabriel Valley Water Company	\$ 161.82	Water Service @ Treatment Plant
8766	Staples	\$ 65.99	Office Supplies
8767	Time Warner Cable	\$ 316.97	Telephone Service
8768	Vulcan Materials Company	\$ 1,005.08	Field Supplies - Asphalt
8769	Weck Laboratories Inc	\$ 134.00	Water Sampling
8770	Wesco Security Systems Inc	\$ 282.00	Security Monitoring
8771	Western Water Works	\$ 1,723.59	Field Supplies - Inventory
8772	United Site Services of Calif Inc	\$ 511.06	Restroom Service @ Treatment Plant
8773	ACWA	\$ 375.00	2021 Spring Conference - Escalera
8774	ACWA/JPIA	\$ 33,080.16	Health Benefits
8775	Cell Business Equipment	\$ 34.49	Office Expense
8776	Continental Utility Solutions Inc	\$ 50.07	Billing Expense
8777	Ferguson Waterworks	\$ 2,845.10	Meter Expense
8778	Hach Company	\$ 592.63	Field Supplies - Compliance
8779	Industry Tire Service Inc	\$ 25.00	Truck Maintenance
8780	InfoSend	\$ 2.50	Billing Expense
8781	SC Edison	\$ 2,937.92	Power Expense
8782	Verizon Wireless	\$ 95.00	Cellular Service
8783	Verizon Wireless	\$ 313.26	Cellular Service
8784	Verizon Wireless	\$ 76.02	Cellular Service
8785	Weck Laboratories Inc	\$ 222.00	Water Sampling
8786	SC Edison	\$ 33,306.15	Power Expense
8787	Verizon Wireless	\$ 114.03	Cellular Service
8788	Petty Cash	\$ 45.89	Office/Field Expense

La Puente Water District April 2021 Disbursements - continued

Check #	Payee	Amount	Description
Online	Home Depot	\$ 412.55	Field Supplies
Autodeduct	Wells Fargo	\$ 106.14	Merchant Fee's
Autodeduct	Wells Fargo	\$ 383.60	Bank Fee's
Autodeduct	First Data Global Leasing	\$ 44.00	Credit Card Machine Lease
Autodeduct	Bluefin Payment Systems	\$ 1,107.74	Web Merchant Fee's
On-line	United States Treasury	\$ 26,710.38	Federal, Social Security & Medicare Taxes
On-line	EDD	\$ 4,493.75	California State & Unemployment Taxes
On-line	Lincoln Financial Group	\$ 7,771.66	Deferred Comp
On-line	CalPERS	\$ 13,907.90	Retirement Program
	Total Payments	\$ 276,748.90	

La Puente Valley County Water District
Payroll Summary
April 2021

	April 2021
Employee Wages, Taxes and Adjustments	
Gross Pay	
Total Gross Pay	106,615.02
Deductions from Gross Pay	
Total Deductions from Gross Pay	<u>-10,292.88</u>
Adjusted Gross Pay	96,322.14
Taxes Withheld	
Federal Withholding	-10,368.00
Medicare Employee	-1,548.77
Social Security Employee	-6,622.42
CA - Withholding	-4,260.35
Medicare Employee Addl Tax	0.00
Total Taxes Withheld	<u>-22,799.54</u>
Net Pay	<u>73,522.60</u>
Employer Taxes and Contributions	
Medicare Company	1,548.77
Social Security Company	6,622.42
CA - Unemployment	122.86
CA - Employment Training Tax	8.19
Total Employer Taxes and Contributions	<u>8,500.24</u>

La Puente Water District April 2021 Disbursements

Total Vendor Payables	\$ <u>276,748.90</u>
Total Payroll	\$ <u>73,522.60</u>
Total April 2021 Disbursements	\$ <u>350,271.50</u>

Industry Public Utilities April 2021 Disbursements

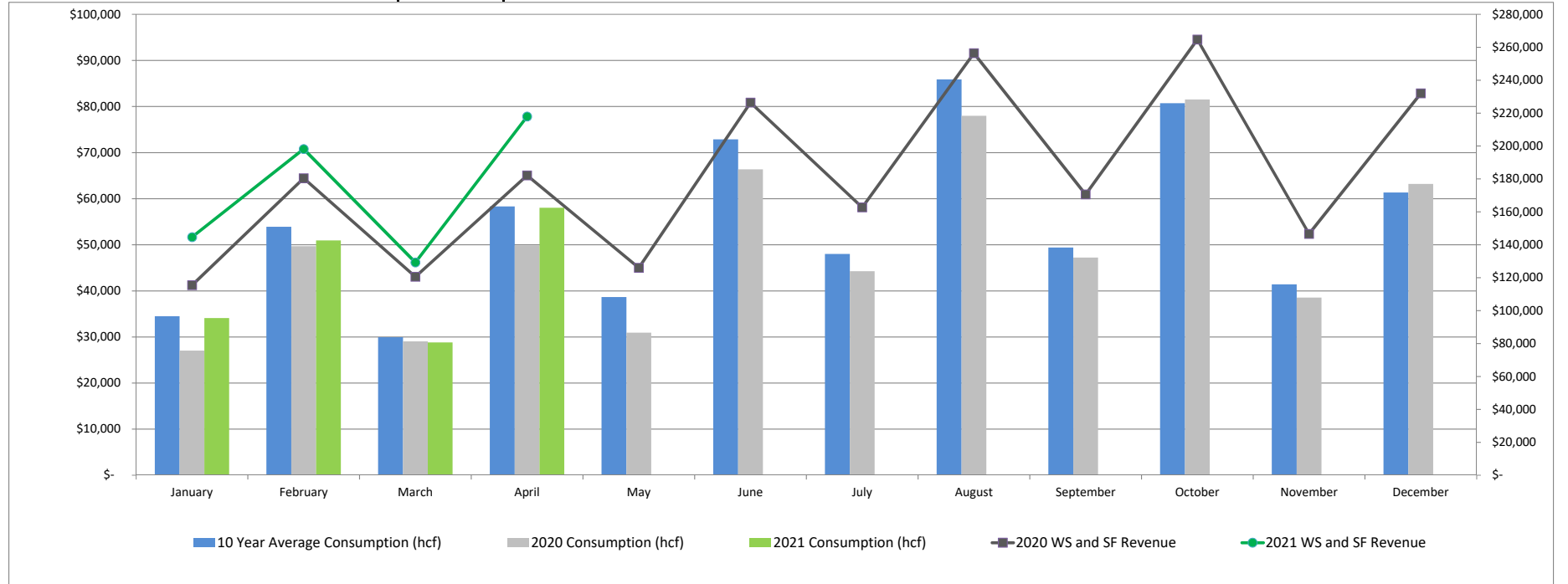
Check #	Payee	Amount	Description
4504	Highroad IT	\$ 465.43	Technical Support & Software
4505	Merritt's Hardware	\$ 78.26	Field Supplies
4506	Peck Road Gravel	\$ 280.00	Asphalt & Concrete Disposal
4507	SC Edison	\$ 11,319.18	Power Expense
4508	SoCal Gas	\$ 15.29	Gas Expense
4509	SoCal SCADA Solutions LLC	\$ 2,675.00	SCADA Software Upgrade
4510	Weck Laboratories Inc	\$ 260.00	Water Sampling
4511	Answering Service Care	\$ 172.86	Answering Service
4512	CCSInteractive	\$ 13.60	Monthly Website Hosting
4513	Doty Bros Equipment Co	\$ 26,556.32	Worker's Compensation Program
4514	G. M. Sager Construction	\$ 8,375.00	Developer Expense - Proctor Ave
4515	Highroad IT	\$ 536.00	Technical Support
4516	La Puente Valley County Water District	\$ 62,156.77	Labor Costs March 2021
4517	Peck Road Gravel	\$ 210.00	Asphalt & Concrete Disposal
4518	SC Edison	\$ 51.68	Power Expense
4519	Time Warner Cable	\$ 82.42	Telephone Service
4520	Underground Service Alert	\$ 223.73	Line Notifications
4521	ACWA/JPIA	\$ 1,316.23	Worker's Compensation Program
4522	Highroad IT	\$ 2,798.00	Annual License Renewals
4523	InfoSend	\$ 698.99	Billing Expense
4524	Janus Pest Management Inc	\$ 65.00	Rodent Control
4525	La Puente Valley County Water District	\$ 191.80	Bank Fee Reimbursement
4526	Peck Road Gravel	\$ 280.00	Asphalt & Concrete Disposal
4527	Resource Building Materials	\$ 188.16	Field Supplies
4528	SC Edison	\$ 12,697.24	Power Expense
4529	SoCal Gas	\$ 18.22	Gas Expense
4530	Time Warner Cable	\$ 287.75	Telephone Service
4531	Weck Laboratories Inc	\$ 107.50	Water Sampling
4532	Citi Cards	\$ 362.38	Administrative Expense
4533	Grainger Inc	\$ 47.98	Field Supplies
4534	Industry Public Utility Commission	\$ 743.92	Industry Hills Power Expense
4535	Janus Pest Management Inc	\$ 260.00	Rodent Control
4536	San Gabriel Valley Water Company	\$ 1,339.38	Purchased Water - Salt Lake
4537	Staples	\$ 65.99	Office Supplies
4538	Vulcan Materials Company	\$ 1,005.07	Field Supplies - Asphalt
4539	Weck Laboratories Inc	\$ 230.00	Water Sampling
4540	Cell Business Equipment	\$ 34.48	Office Expense
4541	Collicutt Energy Services Inc	\$ 826.10	Generator Maintenance
4542	Continental Utility Solutions Inc	\$ 50.07	Billing Expense
4543	InfoSend	\$ 1.00	Billing Expense
4544	SoCal Gas	\$ 14.30	Gas Expense
4545	Verizon Wireless	\$ 95.00	Cellular Service
4546	Verizon Wireless	\$ 313.25	Cellular Service
4547	Verizon Wireless	\$ 76.02	Cellular Service

Industry Public Utilities April 2021 Disbursements - continued

Check #	Payee	Amount	Description
4548	Weck Laboratories Inc	\$ 107.50	Water Sampling
4549	Petty Cash	\$ 26.23	Office/Field Expense
Online	County of LA Department of Public Works	\$ 561.00	Permit Fee's
Autodeduct	Wells Fargo Merchant Fee's	\$ 16.48	Merchant Fee's
Autodeduct	Bluefin Payment Systems	\$ 823.56	Web Merchant Fee's
Autodeduct	Jack Henry & Associates	\$ 47.45	Web E-Check Fee's
Autodeduct	First Data Global Leasing	\$ 44.00	Credit Card Machine Lease
Total April 2021 Disbursements		\$ 139,211.59	

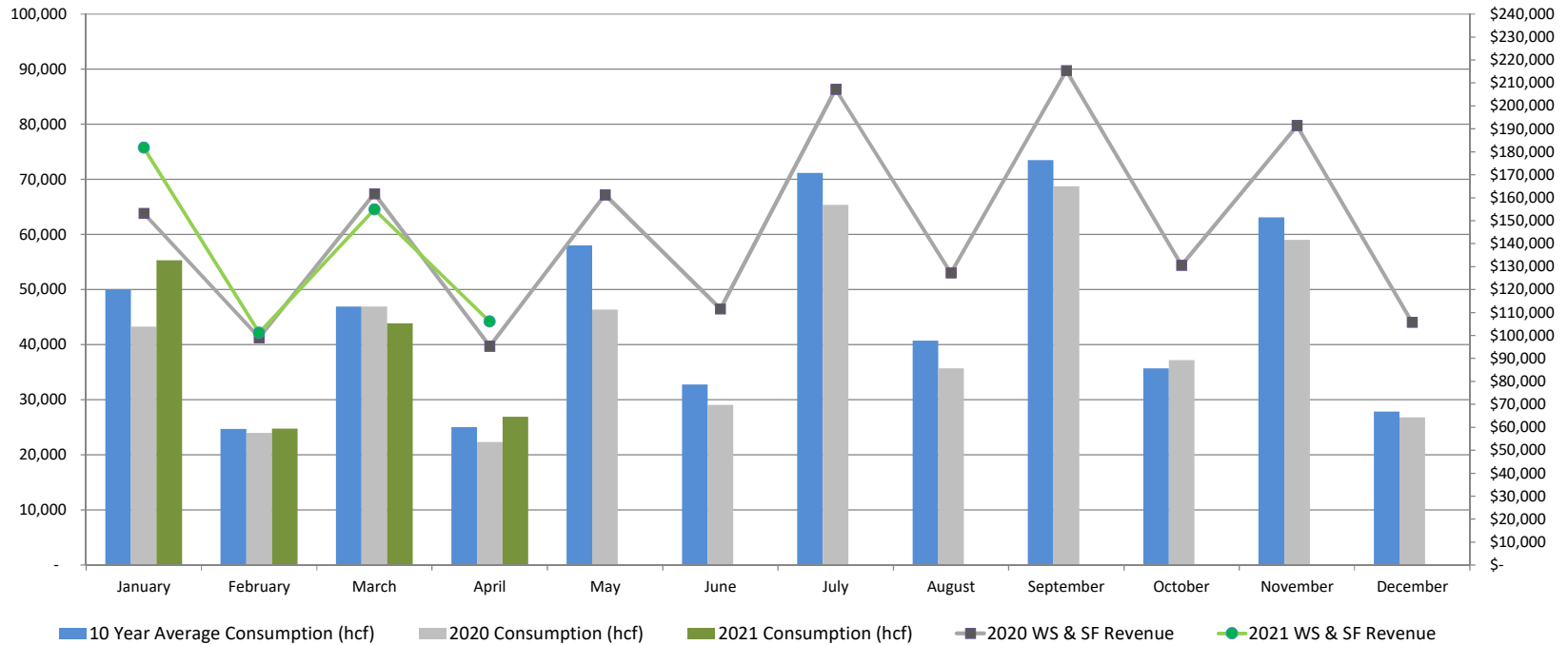
WATER SALES REPORT LPVCWD 2021

LPVCWD	January	February	March	April	May	June	July	August	September	October	November	December	YTD
No. of Customers	1,234	1,225	1,232	1,226	-	-	-	-	-	-	-	-	4,917
2021 Consumption (hcf)	34,084	50,947	28,808	58,010	-	-	-	-	-	-	-	-	171,849
2020 Consumption (hcf)	27,032	49,681	29,037	49,852	30,940	66,359	44,248	77,980	47,229	81,509	38,530	63,201	605,598
2021 Water Sales	\$ 85,585	\$ 128,510	\$ 70,352	\$ 147,969	\$ -	\$ -	\$ -	\$ -	\$ -	\$ -	\$ -	\$ -	\$ 432,416
2020 Water Sales	\$ 60,668	\$ 115,912	\$ 65,851	\$ 117,505	\$ 71,375	\$ 161,813	\$ 108,033	\$ 191,782	\$ 115,906	\$ 199,904	\$ 91,717	\$ 162,205	\$ 1,462,671
2021 Service Fees	\$ 59,080	\$ 69,688	\$ 58,930	\$ 69,968	\$ -	\$ -	\$ -	\$ -	\$ -	\$ -	\$ -	\$ -	\$ 257,667
2020 Service Fees	\$ 54,774	\$ 64,568	\$ 54,738	\$ 64,626	\$ 54,693	\$ 64,589	\$ 54,645	\$ 64,640	\$ 54,709	\$ 64,820	\$ 54,888	\$ 69,808	\$ 721,498
2021 Hyd Fees	\$ 950	\$ 700	\$ 950	\$ 700	\$ -	\$ -	\$ -	\$ -	\$ -	\$ -	\$ -	\$ -	\$ 3,300
2021 DC Fees	\$ 330	\$ 9,330	\$ 264	\$ 9,423	\$ -	\$ -	\$ -	\$ -	\$ -	\$ -	\$ -	\$ -	\$ 19,348
2021 System Revenue	\$ 145,946	\$ 208,228	\$ 130,497	\$ 228,060	\$ -	\$ -	\$ -	\$ -	\$ -	\$ -	\$ -	\$ -	\$ 712,731



WATER SALES REPORT CIWS 2021

CIWS	January	February	March	April	May	June	July	August	September	October	November	December	YTD
No. of Customers	966	894	967	893	-	-	-	-	-	-	-	-	3,720
2021 Consumption (hcf)	55,295	24,763	43,880	26,923	-	-	-	-	-	-	-	-	150,861
2020 Consumption (hcf)	43,254	24,004	46,914	22,357	46,359	29,062	65,359	35,705	68,741	37,218	58,995	26,821	504,789
10 Year Average Consumption (hcf)	50,066	24,735	46,923	25,058	58,020	32,753	71,192	40,731	73,504	35,684	63,128	27,867	549,662
2021 Water Sales	\$ 125,336	\$ 54,667	\$ 98,449	\$ 59,444	\$ -	\$ -	\$ -	\$ -	\$ -	\$ -	\$ -	\$ -	\$ 337,895
2020 Water Sales	\$ 96,852	\$ 52,599	\$ 105,435	\$ 48,866	\$ 104,787	\$ 64,969	\$ 150,971	\$ 80,727	\$ 159,074	\$ 84,148	\$ 134,962	\$ 59,181	\$ 1,142,572
2021 Service Fees	\$ 56,462	\$ 46,526	\$ 56,401	\$ 46,557	\$ -	\$ -	\$ -	\$ -	\$ -	\$ -	\$ -	\$ -	\$ 205,946
2020 Service Fees	\$ 56,384	\$ 46,449	\$ 56,335	\$ 46,480	\$ 56,477	\$ 46,618	\$ 56,244	\$ 46,491	\$ 56,308	\$ 46,479	\$ 56,450	\$ 46,546	\$ 617,263
2021 Hyd Fees	\$ 1,550	\$ 300	\$ 1,550	\$ 300	\$ -	\$ -	\$ -	\$ -	\$ -	\$ -	\$ -	\$ -	\$ 3,700
2021 DC Fees	\$ 11,820	\$ 3,617	\$ 11,727	\$ 3,735	\$ -	\$ -	\$ -	\$ -	\$ -	\$ -	\$ -	\$ -	\$ 30,900
2021 System Revenues	\$ 195,168	\$ 105,110	\$ 168,127	\$ 110,036	\$ -	\$ -	\$ -	\$ -	\$ -	\$ -	\$ -	\$ -	\$ 578,441



Memo



To: Honorable Board of Directors
From: Roy Frausto, General Manager
Date: May 10, 2021
Re: Ad hoc Committee Assignments

Below are the active Ad hoc Committee assignments.

- **Recycled Water Project:** President Rojas and Director Hernandez
- **Nitrate Treatment Planning:** President Rojas and Director Escalera

At the upcoming Board of Directors meeting, staff would like to discuss the need of the proposed New Office Ad Hoc Committee.

Recommendation: Board Approval of Proposed Ad Hoc Committee on New Office

If you have any questions, please feel free to give me a call.

STAFF REPORT



Meeting Date: May 10, 2021

To: Honorable Board of Directors

Subject: Consideration to Approve the District’s Standard Drawings for Potable and Recycled Water

Purpose - *To formally approve the District’s standard drawings for construction of potable and recycled water infrastructure.*

Recommendation - *Board approval of the District’ standard drawings for potable and recycled water and authorize the District’s General Manager to update the District’s Standard Drawings as needed.*

Fiscal Impact - *There is no fiscal impact to the 2021 Budget provided that all engineering work associated with the design of these standards was conducted by Staff.*

Background

As the Board is aware, District staff processes requests for new water services such as fire services, meter connections and fire hydrants to support development projects within the District’s service area. These development projects require various types of deliverables to ensure new District infrastructure is constructed to industry standards. Standard Drawings provide a specification to developers and engineers through the process of design and construction of new water and recycled water facilities to ensure they are constructed in accordance to the District’s specifications.

Summary

Staff has developed Standard Drawings for potable and recycled water (see **Enclosure 1**) that detail construction specifications for the following water and recycled water infrastructure:

Drawing #	Drawing Name	Drawing #	Drawing Name
W-1	1" WATER SERVICE	W-6	VALVE BOX AND COVER IN ASPHALT PAVEMENT
W-1A	1" WATER SERVICE W/FIRE SYSTEM SUPPLY	W-6A	VALVE BOX AND COVER IN CONCRETE PAVEMENT
W-1R	1" RECYCLED SERVICE	W-6R	VALVE BOX AND COVER FOR RECYCLED WATER
W-2	1.5" & 2" WATER SERVICE	W-7	CONCRETE THRUST BLOCKS
W-2A	1.5" & 2" IRRIGATION SERVICE	W-8	TYPICAL TRENCH DETAIL
W-2R	1.5" & 2" RECYCLED SERVICE	W-9	3-INCH AND GREATER WATER SERVICE
W-3	2" BLOW-OFF ASSEMBLY	W-10	DOUBLE CHECK DETECTOR ASSEMBLY BACKFLOW
W-3R	2" RECYCLED BLOW-OFF ASSEMBLY	W-11	REDUCED PRESSURE PRINCIPAL BACKFLOW
W-4	1" AIR RELEASE ASSEMBLY	W-12	GATE AND BUTTERFLY VALVE
W-4R	1" RECYCLED AIR RELEASE ASSEMBLY	W-13	3-INCH AND GREATER FIRE SERVICE
W-5	6-INCH FIRE HYDRANT ASSEMBLY		

Note that Standard Drawings are updated periodically to ensure materials and construction specifications are kept up to date with local, state and industry standards.

Fiscal Impact

There is no fiscal impact to the 2021 Budget provided that all engineering work associated with the design of these standards was conducted by Staff.

Recommendation

Board approval of the District' standard drawings for potable and recycled water and authorize the District's General Manager to update the District's Standard Drawings as needed.

Respectfully Submitted,

A handwritten signature in blue ink, consisting of a large, stylized loop followed by a horizontal line and a small flourish.

General Manager

Enclosure(s)

- (1) *Standard Drawings for Potable and Recycled Water*



LA PUENTE VALLEY COUNTY WATER DISTRICT STANDARD DRAWINGS



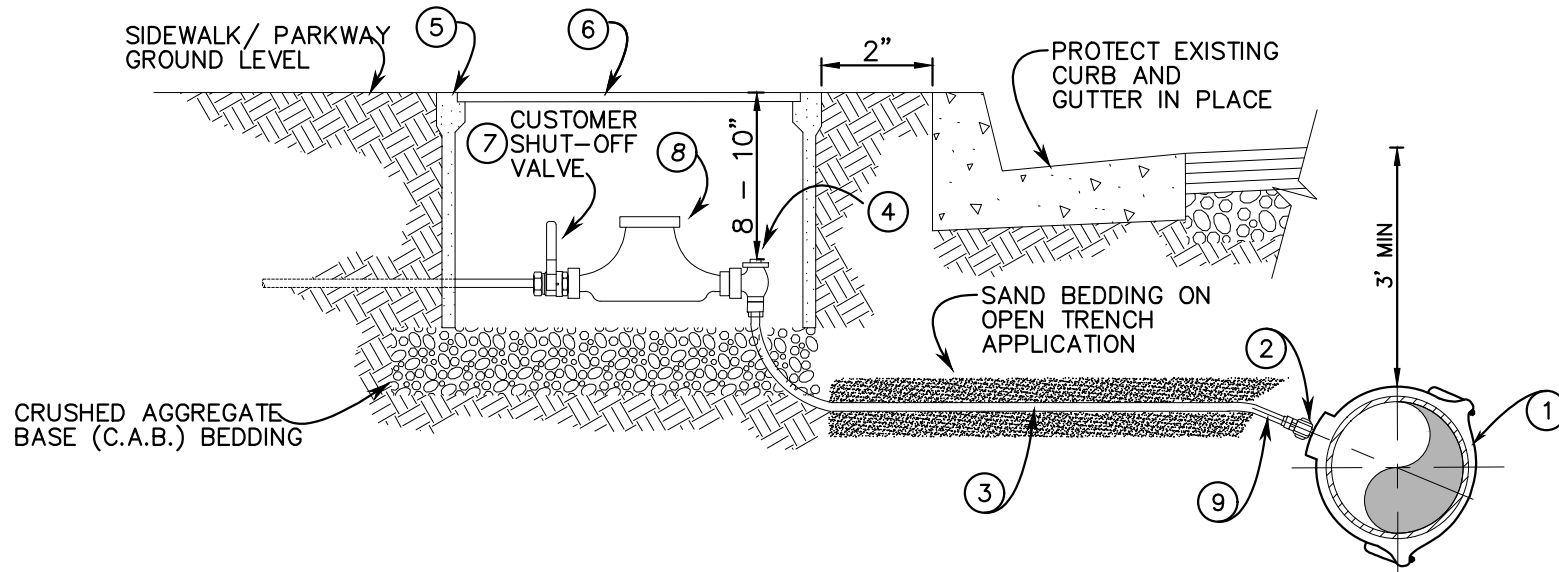
UPDATED MAY 2021

STANDARD DRAWINGS FOR POTABLE AND RECYCLED WATER

MAY 2021

Drawing #	Drawing Name	Revision Date
W-1	1" WATER SERVICE	May-21
W-1A	1" WATER SERVICE W/FIRE SYSTEM SUPPLY	May-21
W-1R	1" RECYCLED SERVICE	May-21
W-2	1.5" & 2" WATER SERVICE	May-21
W-2A	1.5" & 2" IRRIGATION SERVICE	May-21
W-2R	1.5" & 2" RECYCLED SERVICE	May-21
W-3	2" BLOW-OFF ASSEMBLY	May-21
W-3R	2" RECYCLED BLOW-OFF ASSEMBLY	May-21
W-4	1" AIR RELEASE ASSEMBLY	May-21
W-4R	1" RECYCLED AIR RELEASE ASSEMBLY	May-21
W-5	6-INCH FIRE HYDRANT ASSEMBLY	May-21
W-6	VALVE BOX AND COVER IN ASPHALT PAVEMENT	May-21
W-6A	VALVE BOX AND COVER IN CONCRETE PAVEMENT	May-21
W-6R	VALVE BOX AND COVER FOR RECYCLED WATER	May-21
W-7	CONCRETE THRUST BLOCKS	May-21
W-8	TYPICAL TRENCH DETAIL	May-21
W-9	3-INCH AND GREATER WATER SERVICE	May-21
W-10	DOUBLE CHECK DETECTOR ASSEMBLY BACKFLOW	May-21
W-11	REDUCED PRESSURE PRINCIPLE BACKFLOW	May-21
W-12	GATE AND BUTTERFLY VALVE	May-21
W-13	3-INCH AND GREATER FIRE SERVICE	May-21

NOT TO SCALE



CONSTRUCTION NOTES:

1. SERVICE SADDLE SHALL NOT BE INSTALLED WITHIN 24" OF VALVE, COUPLING, JOINT OR FITTING. TAPPED COUPLINGS ARE NOT PERMITTED.
2. INSTALL CORPORATION STOP IN OPEN POSITION.
3. THE WATER SERVICE SHALL EXTEND PERPENDICULAR TO THE CENTERLINE OF THE STREET FROM THE WATERMAIN TO THE ANGLE STOP.
4. METER BOXES SHALL BE SET 2" FROM THE BACK OF CURB
5. EACH METER SHALL HAVE A CUSTOMER SHUT OFF VALVE.
6. METER BOX, LID AND COVER SHALL BE FURNISHED BY CONTRACTOR.
7. INSTALL #12 GAUGE TRACER WIRE ALONG WITH ALL PEX TUBING.

MATERIALS

ITEM NO.	SIZE & DESCRIPTION	MANUFACTURER	SPEC NO.
①	DOUBLE STRAP BRONZE SERVICE SADDLE 1" M.I.P. OUTLET	JONES MUELLER	J-979 BR2B
②	1" BRONZE CORPORATION VALVE BALL TYPE M.I.P. x C.T.S.	JONES MUELLER	E-1935SG EQUAL
③	1" "BLUE" PEX TUBING	MUNICIPEX	SDR9 (CTS)
④	1" ANGLE METER VALVE CTS X METER SWIVEL	JONES MUELLER	E-1963WSG EQUAL
⑤	METER BOX	ARMORCAST	A6001946PC12
⑥	METER COVER & DROP IN LID	ARMORCAST	A6001866DW & A6000481D
⑦	CUSTOMER BALL SHUT-OFF VALVE METER-SWIVEL X F.I.P.	JONES MUELLER	E-1908W EQUAL
⑧	WATER METER (SIZE VARIES)	SUPPLIED BY DISTRICT	
⑨	1" CTS PIPE INSERT	JONES MUELLER	J-2808 M528705

1-INCH WATER SERVICE

APPROVED BY:

 ROY FRAUSTO
 GENERAL MANAGER

DATE



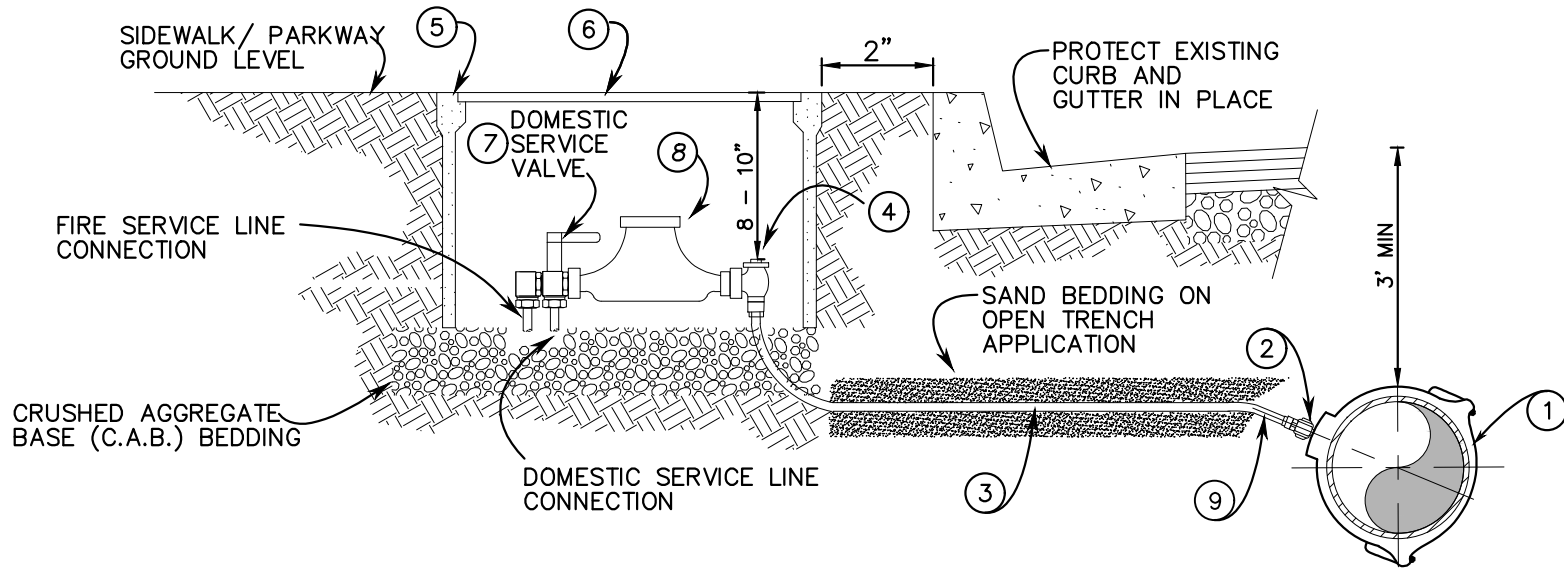
DRAWING #
W-1

REVISION DATE:
 MAY
 2021

LA PUENTE VALLEY
 COUNTY WATER DISTRICT

1" WATER
 SERVICE DETAIL

NOT TO SCALE



CONSTRUCTION NOTES:

1. SERVICE SADDLE SHALL NOT BE INSTALLED WITHIN 24" OF VALVE, COUPLING, JOINT OR FITTING. TAPPED COUPLINGS ARE NOT PERMITTED.
2. INSTALL CORPORATION STOP IN OPEN POSITION.
3. THE WATER SERVICE SHALL EXTEND PERPENDICULAR TO THE CENTERLINE OF THE STREET FROM THE WATERMAIN TO THE ANGLE STOP.
4. METER BOXES SHALL BE SET 2" FROM THE BACK OF CURB
5. CUSTOMER SHUT OFF VALVE ONLY ON DOMESTIC SERVICE.
6. METER BOX AND LID SHALL BE FURNISHED BY CONTRACTOR.
7. INSTALL #12 GAUGE TRACER WIRE ALONG WITH ALL PEX TUBING.

MATERIALS

ITEM NO.	SIZE & DESCRIPTION	MANUFACTURER	SPEC NO.
①	DOUBLE STRAP BRONZE SERVICE SADDLE 1" M.I.P. OUTLET	JONES MUELLER	J-979 BR2B
②	1" BRONZE CORPORATION VALVE BALL TYPE M.I.P. x C.T.S.	JONES MUELLER	E-1935SG EQUAL
③	1" "BLUE" PEX TUBING	MUNICIPEX	SDR9 (CTS)
④	1" ANGLE METER VALVE CTS X METER SWIVEL	JONES MUELLER	E-1963WSG EQUAL
⑤	METER BOX	ARMORCAST	A6001946PC12
⑥	METER LID	NICOR	B30NLSGWT
⑦	FIRE SERVICE CONNECTION METER-SWIVEL X F.I.P.	JONES	E-2220
⑧	WATER METER (SIZE VARIES)	SUPPLIED BY DISTRICT	
⑨	1" CTS PIPE INSERT	JONES MUELLER	J-2808 M528705

1-INCH WATER SERVICE WITH FIRE SYSTEM SUPPLY

APPROVED BY:
 ROY FRAUSTO
 GENERAL MANAGER

DATE



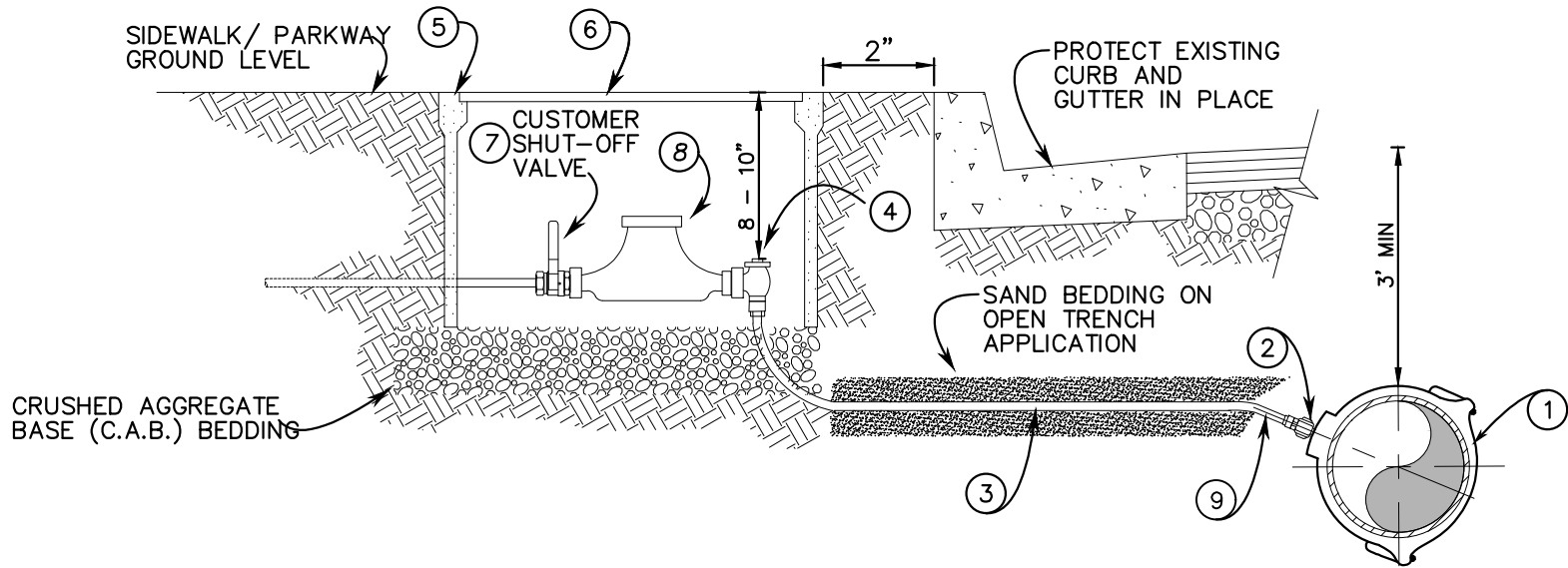
DRAWING #
W-1A

REVISION DATE:
 MAY 2021

LA PUENTE VALLEY
 COUNTY WATER DISTRICT

1" WATER
 SERVICE W/FIRE SYSTEM
 SUPPLY DETAIL

NOT TO SCALE



CONSTRUCTION NOTES:

1. SERVICE SADDLE SHALL NOT BE INSTALLED WITHIN 24" OF VALVE, COUPLING, JOINT OR FITTING. TAPPED COUPLINGS ARE NOT PERMITTED.
2. INSTALL CORPORATION STOP IN OPEN POSITION.
3. THE WATER SERVICE SHALL EXTEND PERPENDICULAR TO THE CENTERLINE OF THE STREET FROM THE WATERMAIN TO THE ANGLE STOP.
4. METER BOXES SHALL BE SET 2" FROM THE BACK OF CURB
5. EACH METER SHALL HAVE A CUSTOMER SHUT OFF VALVE.
6. METER BOX AND LID SHALL BE FURNISHED BY CONTRACTOR.
7. INSTALL #12 GAUGE TRACER WIRE ALONG WITH ALL PEX TUBING.

MATERIALS

ITEM NO.	SIZE & DESCRIPTION	MANUFACTURER	SPEC NO.
①	DOUBLE STRAP BRONZE SERVICE SADDLE 1" M.I.P. OUTLET	JONES MUELLER	J-979 BR2B
②	1" BRONZE CORPORATION VALVE BALL TYPE M.I.P. x C.T.S.	JONES MUELLER	E-1935SG EQUAL
③	1" "PURPLE" PEX TUBING	MUNICIPEX	SDR9 (CTS)
④	1" ANGLE METER VALVE CTS X METER SWIVEL	JONES MUELLER	E-1963WSG EQUAL
⑤	METER BOX	ARMORCAST	A6001946PC12
⑥	METER LID	NICOR INC	B30NLSCGWAT
⑦	CUSTOMER BALL SHUT-OFF VALVE METER-SWIVEL X F.I.P.	JONES MUELLER	E-1908W EQUAL
⑧	WATER METER (SIZE VARIES)	SUPPLIED BY DISTRICT	
⑨	1" CTS PIPE INSERT	JONES MUELLER	J-2808 M528705

1" RECYCLED SERVICE

APPROVED BY:
 ROY FRAUSTO
 GENERAL MANAGER

DATE

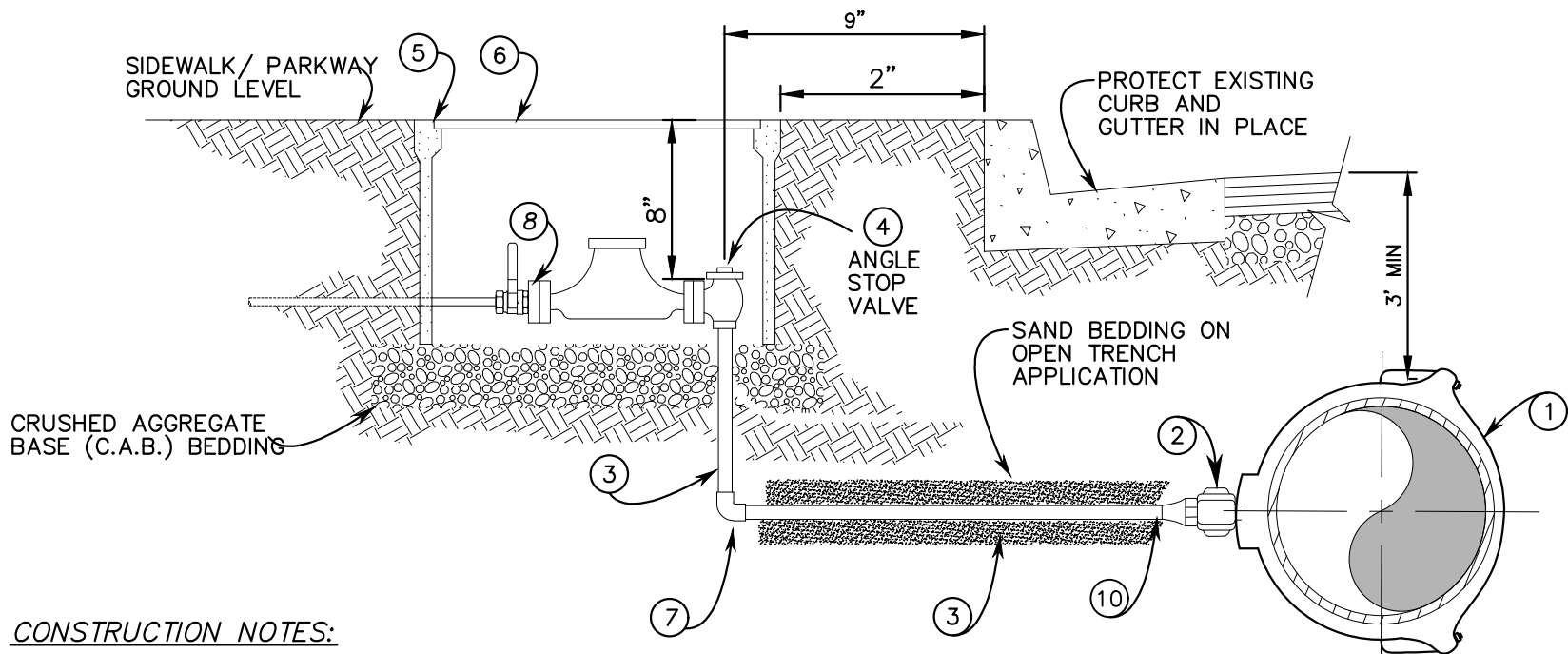


DRAWING #
 W-1R
 REVISION DATE:
 MAY
 2021

LA PUENTE VALLEY
 COUNTY WATER DISTRICT

1" RECYCLED
 SERVICE DETAIL

NOT TO SCALE



CONSTRUCTION NOTES:

1. SERVICE SADDLE SHALL NOT BE INSTALLED WITHIN 24" OF VALVE, COUPLING, JOINT OR FITTING. TAPPED COUPLINGS ARE NOT PERMITTED.
2. INSTALL CORPORATION STOP IN OPEN POSITION.
3. THE WATER SERVICE SHALL EXTEND PERPENDICULAR TO THE CENTERLINE OF THE STREET FROM THE WATERMAIN TO THE ANGLE STOP.
4. METER BOXES SHALL BE SET 2" FROM THE BACK OF CURB.
5. EACH METER SHALL HAVE A CUSTOMER SHUT OFF VALVE.
6. METER BOX AND LID SHALL BE FURNISHED BY CONTRACTOR.
7. INSTALL APPROPRIATE REDUCER FOR 1.5" METER SERVICE.
8. INSTALL #12 GAUGE TRACER WIRE ALONG WITH ALL PEX TUBING.

1.5 & 2-INCH
WATER SERVICE

MATERIALS

ITEM NO.	SIZE & DESCRIPTION	MANUFACTURER	SPEC. NO.
①	DOUBLE STRAP BRONZE SERVICE SADDLE 2" I.P. OUTLET	JONES MUELLER	J-979 EQUAL
②	2" BRONZE CORPORATION VALVE BALL TYPE I.P. x CTS	JONES MUELLER	E-1935SG EQUAL
③	2" "BLUE" PEX TUBING	MUNICIPEX	SDR9 (CTS)
④	2" ANGLE METER VALVE CTS X METER FLG	JONES MUELLER	E-1975WSG EQUAL
⑤	METER BOX	ARMORCAST	A6001640PC12
⑥	METER LID	NICOR INC	B36NLSCGWAT
⑦	2" CTS X CTS 90		
⑧	CUSTOMER BALL SHUT-OFF VALVE F.I.P. X METER FLG	JONES MUELLER	E-1912W EQUAL
⑨	WATER METER (SIZE VARIES)	SUPPLIED BY DISTRICT	
⑩	2" CTS PIPE INSERT	JONES MUELLER	J-2808 M528705

APPROVED BY:

ROY FRAUSTO
GENERAL MANAGER

DATE



DRAWING #

W-2

REVISION DATE:

MAY
2021

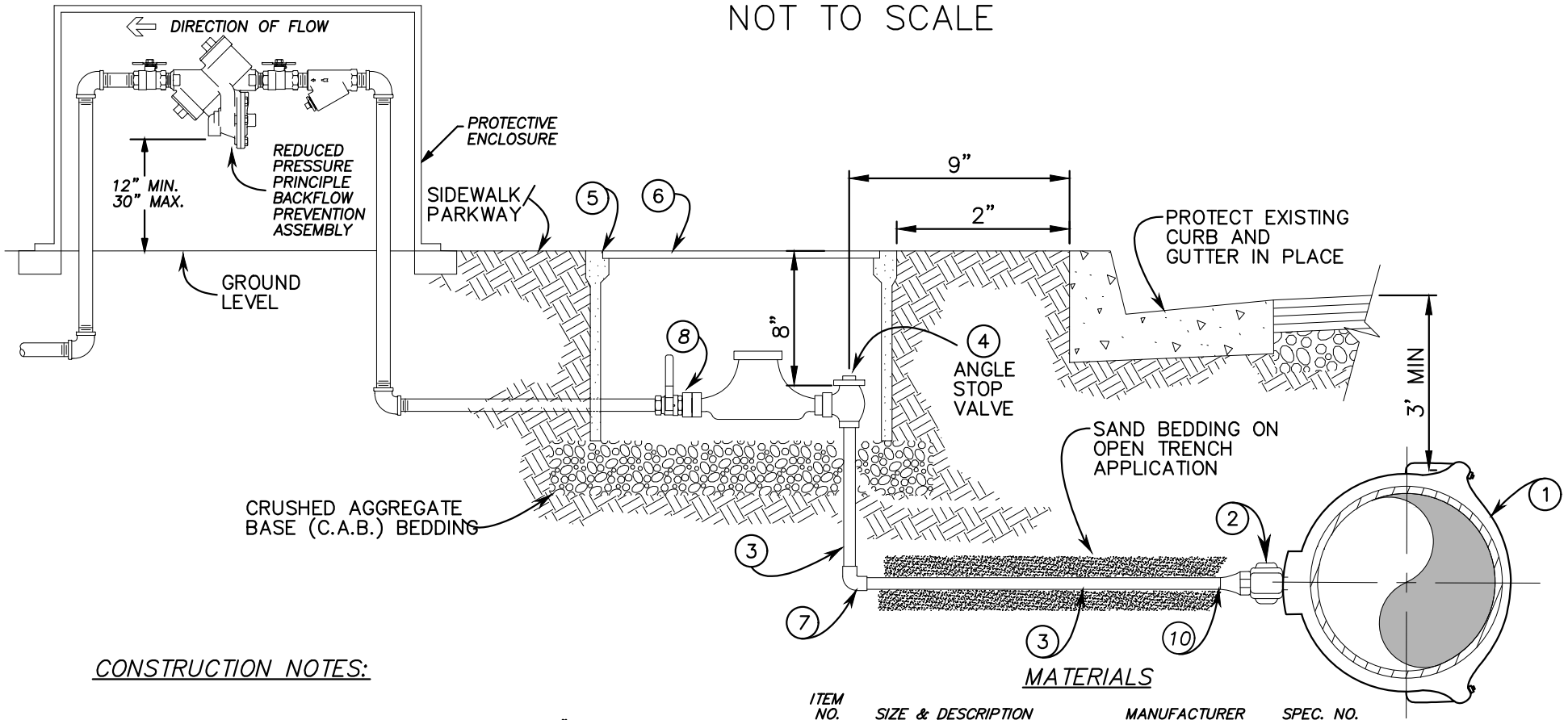
LA PUENTE VALLEY
COUNTY WATER DISTRICT

1.5" & 2" WATER
SERVICE DETAIL

1

OF 1

NOT TO SCALE



CONSTRUCTION NOTES:

1. SERVICE SADDLE SHALL NOT BE INSTALLED WITHIN 24" OF VALVE, COUPLING, JOINT OR FITTING. TAPPED COUPLINGS ARE NOT PERMITTED.
2. INSTALL CORPORATION STOP IN OPEN POSITION.
3. THE WATER SERVICE SHALL EXTEND PERPENDICULAR TO THE CENTERLINE OF THE STREET FROM THE WATERMAIN TO THE ANGLE STOP.
4. METER BOXES SHALL BE SET 2" FROM THE BACK OF CURB
5. EACH METER SHALL HAVE A CUSTOMER SHUT OFF VALVE.
6. METER BOX AND LID SHALL BE FURNISHED BY CONTRACTOR.
7. INSTALL APPROPRIATE REDUCER FOR 1.5" METER SERVICE.
8. INSTALL #12 GAUGE TRACER WIRE ALONG WITH ALL PEX TUBING.

MATERIALS

ITEM NO.	SIZE & DESCRIPTION	MANUFACTURER	SPEC. NO.
①	DOUBLE STRAP BRONZE SERVICE SADDLE 2" I.P. OUTLET	JONES MUELLER	J-979 EQUAL
②	2" BRONZE CORPORATION VALVE BALL TYPE I.P. x CTS	JONES MUELLER	E-1935SG EQUAL
③	2" "BLUE" PEX TUBING	MUNICIPEX	SDR9 (CTS)
④	2" ANGLE METER VALVE CTS X METER FLG	JONES MUELLER	E-1975WSG EQUAL
⑤	METER BOX	ARMORCAST	A6001640PC12
⑥	METER LID	NICOR INC	B36NLSCGWAT
⑦	2" CTS X CTS 90		
⑧	CUSTOMER BALL SHUT-OFF VALVE F.I.P. X METER FLG	JONES MUELLER	E-1912W EQUAL
⑨	WATER METER (SIZE VARIES)	SUPPLIED BY DISTRICT	
⑩	2" CTS PIPE INSERT	JONES MUELLER	J-2808 M528705

1.5 & 2-INCH IRRIGATION SERVICE

APPROVED BY: _____
 ROY FRAUSTO
 GENERAL MANAGER

DATE: _____

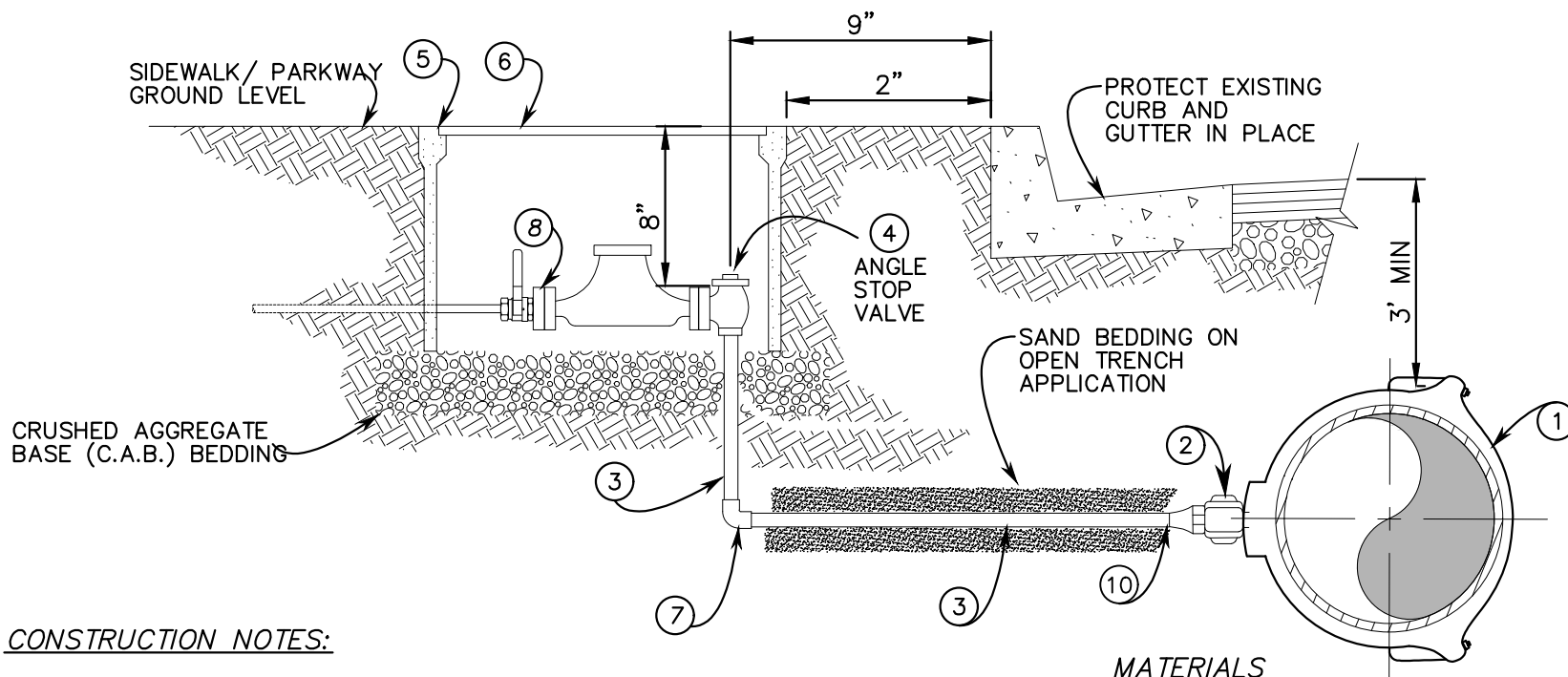


DRAWING #
W-2A
 REVISION DATE:
 MAY
 2021

LA PUENTE VALLEY
 COUNTY WATER DISTRICT

1.5" & 2" IRRIGATION
 SERVICE DETAIL

NOT TO SCALE



CONSTRUCTION NOTES:

1. SERVICE SADDLE SHALL NOT BE INSTALLED WITHIN 24" OF VALVE, COUPLING, JOINT OR FITTING. TAPPED COUPLINGS ARE NOT PERMITTED.
2. INSTALL CORPORATION STOP IN OPEN POSITION.
3. THE WATER SERVICE SHALL EXTEND PERPENDICULAR TO THE CENTERLINE OF THE STREET FROM THE WATERMAIN TO THE ANGLE STOP.
4. METER BOXES SHALL BE SET 2" FROM THE BACK OF CURB.
5. EACH METER SHALL HAVE A CUSTOMER SHUT OFF VALVE.
6. METER BOX AND LID SHALL BE FURNISHED BY CONTRACTOR.
7. INSTALL APPROPRIATE REDUCER FOR 1.5" METER SERVICE.
8. INSTALL #12 GAUGE TRACER WIRE ALONG WITH ALL PEX TUBING.

MATERIALS

ITEM NO.	SIZE & DESCRIPTION	MANUFACTURER	SPEC. NO.
①	DOUBLE STRAP BRONZE SERVICE SADDLE 2" I.P. OUTLET	JONES MUELLER	J-979 EQUAL
②	2" BRONZE CORPORATION VALVE BALL TYPE I.P. x CTS	JONES MUELLER	E-1935SG EQUAL
③	2 "PURPLE" PEX TUBING	MUNICIPEX	SDR9 (CTS)
④	2" ANGLE METER VALVE CTS X METER FLG	JONES MUELLER	E-1975WSG EQUAL
⑤	METER BOX	ARMORCAST	A6001640PC12
⑥	METER LID	NICOR INC	B36NLSCGWAT
⑦	2" CTS X CTS 90		
⑧	CUSTOMER BALL SHUT-OFF VALVE F.I.P. X METER FLG	JONES MUELLER	E-1912W EQUAL
⑨	WATER METER (SIZE VARIES)	SUPPLIED BY DISTRICT	
⑩	2" CTS PIPE INSERT	JONES MUELLER	J-2808 M528705

1.5 & 2-INCH RECYCLED SERVICE

APPROVED BY: _____
 ROY FRAUSTO
 GENERAL MANAGER

DATE _____



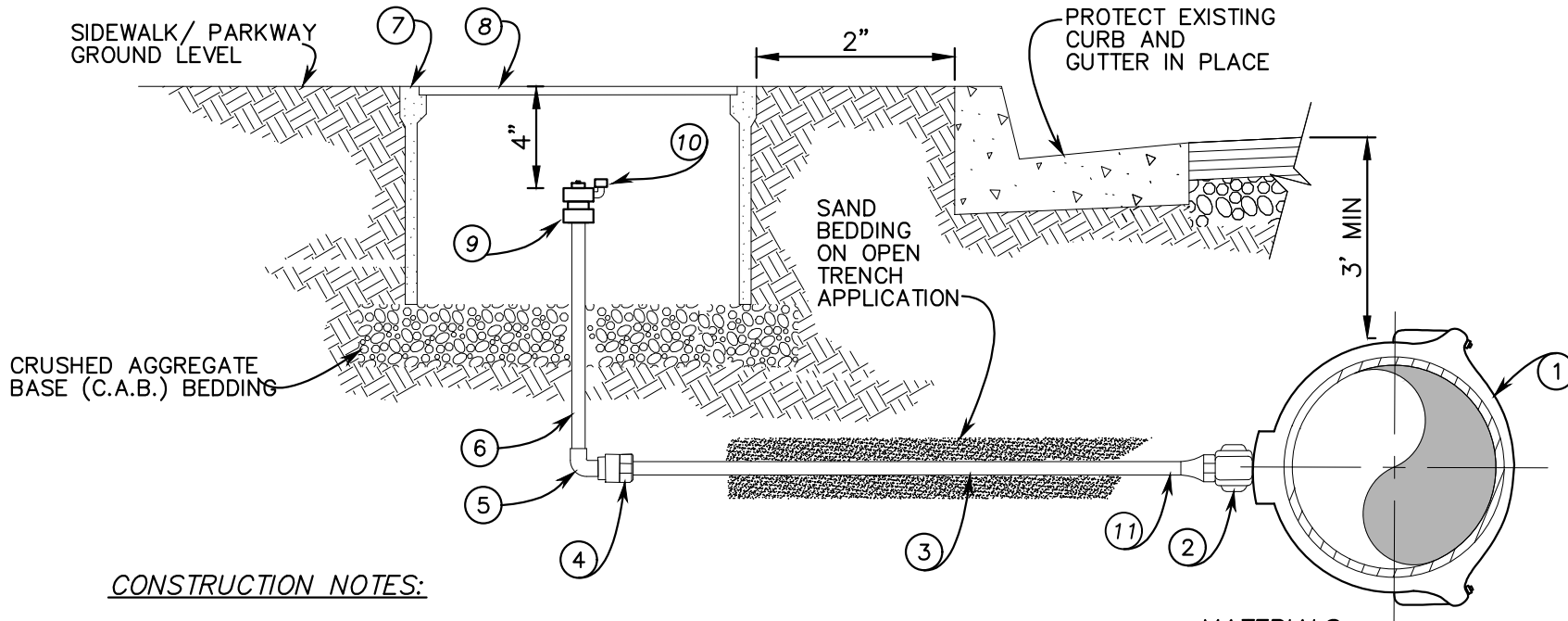
DRAWING #
W-2R

REVISION DATE:
 MAY
 2021

LA PUENTE VALLEY
 COUNTY WATER DISTRICT

1.5" & 2" RECYCLED
 SERVICE DETAIL

NOT TO SCALE



CONSTRUCTION NOTES:

1. SERVICE SADDLE SHALL NOT BE INSTALLED WITHIN 24" OF VALVE, COUPLING, JOINT OR FITTING. TAPPED COUPLINGS ARE NOT PERMITTED.
2. INSTALL CORPORATION STOP IN OPEN POSITION.
3. THE WATER SERVICE SHALL EXTEND PERPENDICULAR TO THE CENTERLINE OF THE STREET FROM THE WATERMAIN TO THE ANGLE STOP.
4. METER BOXES SHALL BE SET 2" FROM THE BACK OF CURB
5. METER BOX AND LID SHALL BE FURNISHED BY CONTRACTOR.
6. INSTALL #12 GAUGE TRACER WIRE ALONG WITH ALL PEX TUBING.

MATERIALS

ITEM NO.	SIZE & DESCRIPTION	MANUFACTURER	SPEC. NO.
①	DOUBLE STRAP BRONZE SERVICE SADDLE 2" M.I.P. OUTLET	JONES MUELLER	J-979 EQUAL
②	2" BRONZE CORPORATION VALVE BALL TYPE M.I.P. x CTS	JONES MUELLER	E-1935SG EQUAL
③	2" "BLUE" PEX TUBING	MUNICIPEX	SDR9 (CTS)
④	2" CTS X M.I.P. BRASS ADAPTER	JONES MUELLER	E-2605SG EQUAL
⑤	2" BRASS F.I.P. X F.I.P. ELBOW		
⑥	2" BRASS M.I.P. X M.I.P. NIPPLE	(LENGTH VARIES)	
⑦	METER BOX	ARMORCAST	A6001946PC12
⑧	METER LID & COVER	ARMORCAST	A6001866DW & A6000481D
⑨	BLOW-OFF BALL VALVE	JONES MUELLER	E-1998 EQUAL
⑩	2" BRASS SCREWED PLUG WITH M.I.P. THREAD		
⑪	2" CTS PIPE INSERT	JONES MUELLER	J-2808 M528705

2-INCH BLOW-OFF ASSEMBLY

APPROVED BY:

 ROY FRAUSTO
 GENERAL MANAGER

DATE



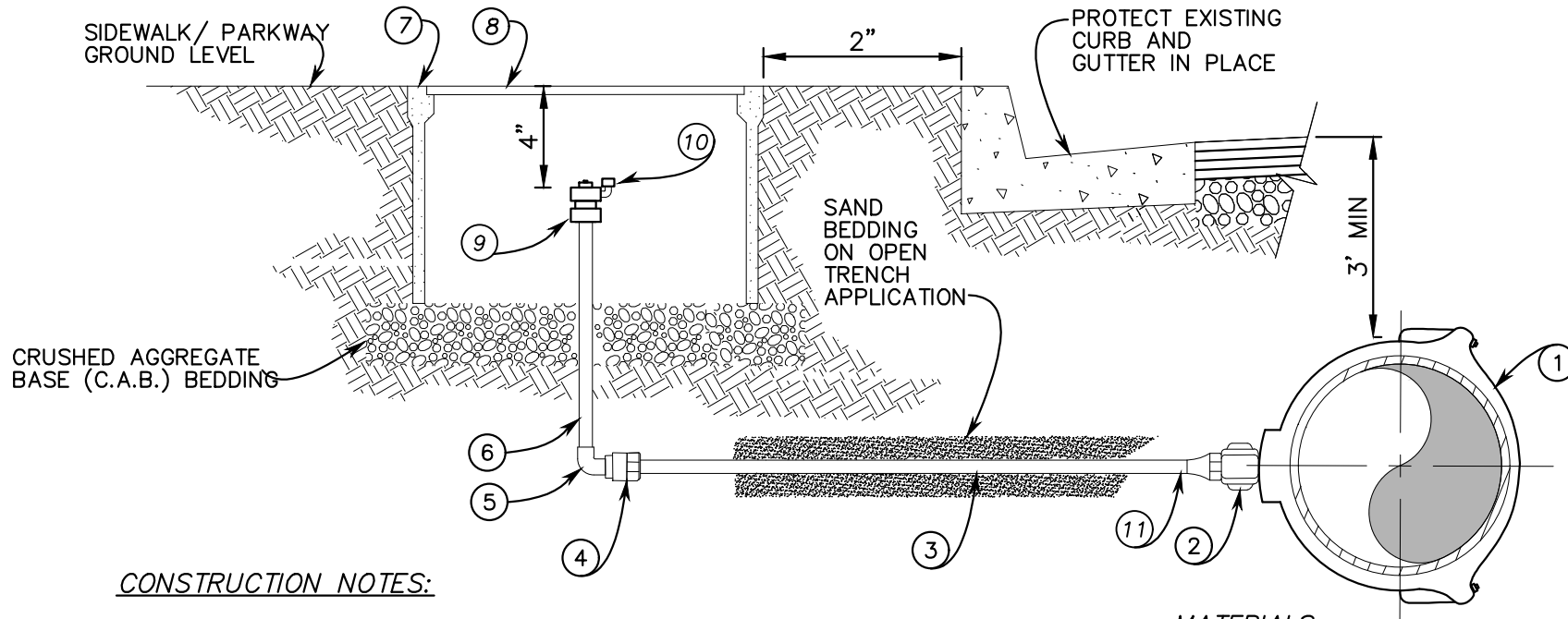
DRAWING #
W-3

REVISION DATE:
 MAY
 2021

LA PUENTE VALLEY
 COUNTY WATER DISTRICT

2" BLOW-OFF
 ASSEMBLY

NOT TO SCALE



CONSTRUCTION NOTES:

1. SERVICE SADDLE SHALL NOT BE INSTALLED WITHIN 24" OF VALVE, COUPLING, JOINT OR FITTING. TAPPED COUPLINGS ARE NOT PERMITTED.
2. INSTALL CORPORATION STOP IN OPEN POSITION.
3. THE WATER SERVICE SHALL EXTEND PERPENDICULAR TO THE CENTERLINE OF THE STREET FROM THE WATERMAIN TO THE ANGLE STOP.
4. METER BOXES SHALL BE SET 2" FROM THE BACK OF CURB.
5. METER BOX AND LID SHALL BE FURNISHED BY CONTRACTOR.
6. INSTALL #12 GAUGE TRACER WIRE ALONG WITH ALL PEX TUBING.

MATERIALS

ITEM NO.	SIZE & DESCRIPTION	MANUFACTURER	SPEC. NO.
①	DOUBLE STRAP BRONZE SERVICE SADDLE 2" M.I.P. OUTLET	JONES MUELLER	J-979 EQUAL
②	2" BRONZE CORPORATION VALVE BALL TYPE M.I.P. x CTS	JONES MUELLER	E-1935SG EQUAL
③	2 "PURPLE" PEX TUBING	MUNICIPEX	SDR9 (CTS)
④	2" CTS X M.I.P. BRASS ADAPTER	JONES MUELLER	E-2605SG EQUAL
⑤	2" BRASS F.I.P. X F.I.P. ELBOW		(LENGTH VARIES)
⑥	2" BRASS M.I.P. X M.I.P. NIPPLE		(LENGTH VARIES)
⑦	METER BOX	ARMORCAST	A6001946PC12
⑧	METER LID & COVER	ARMORCAST	A6001866DW & A6000481D
⑨	BLOW-OFF BALL VALVE	JONES MUELLER	E-1998 EQUAL
⑩	2" BRASS SCREWED PLUG WITH M.I.P. THREAD		
⑪	2" CTS PIPE INSERT	JONES MUELLER	J-2808 M528705

2-INCH RECYCLED BLOW-OFF ASSEMBLY

APPROVED BY:
 ROY FRAUSTO
 GENERAL MANAGER

DATE



DRAWING #
W-3R

REVISION DATE:
 MAY
 2021

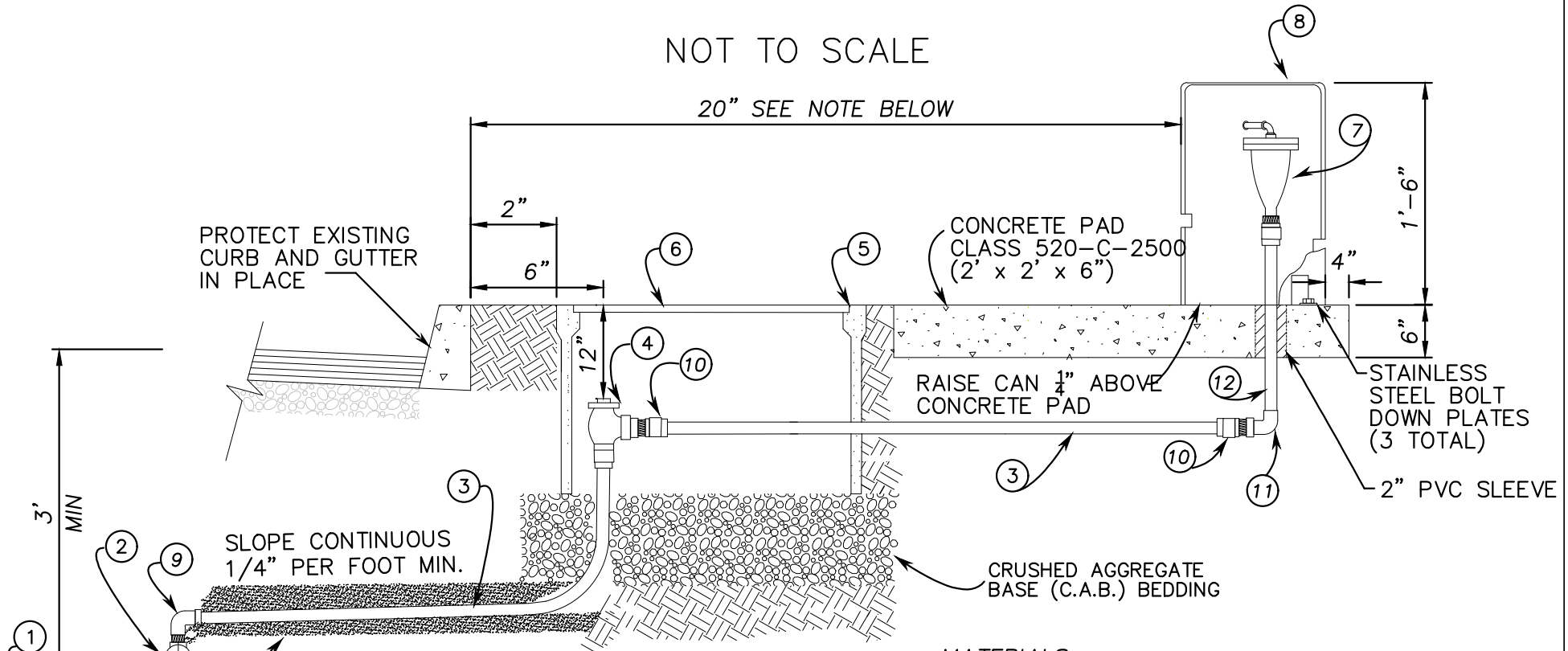
LA PUENTE VALLEY
 COUNTY WATER DISTRICT

2" RECYCLED
 BLOW-OFF ASSEMBLY

1
 OF 1

NOT TO SCALE

20" SEE NOTE BELOW



PROTECT EXISTING CURB AND GUTTER IN PLACE

SLOPE CONTINUOUS 1/4" PER FOOT MIN.

SAND BEDDING ON OPEN TRENCH APPLICATION

CONCRETE PAD CLASS 520-C-2500 (2' x 2' x 6")

RAISE CAN 1/4" ABOVE CONCRETE PAD

CRUSHED AGGREGATE BASE (C.A.B.) BEDDING

STAINLESS STEEL BOLT DOWN PLATES (3 TOTAL)

2" PVC SLEEVE

MATERIALS

ITEM NO.	SIZE & DESCRIPTION	MANUF.	SPEC. NO.	ITEM NO.	SIZE & DESCRIPTION	MANUF.	SPEC. NO.
①	DOUBLE STRAP BRONZE SERVICE SADDLE 1" I.P. OUTLET	JONES MUELLER	J-979 EQUAL	⑨	1" 90 M.I.P. X CTS	JONES MUELLER	SE-2619SG EQUAL
②	1" BRONZE CORPORATION VALVE BALL TYPE M.I.P. X F.I.P.	JONES MUELLER	E-1931 EQUAL	⑩	1" STRAIGHT COUPLING M.I.P. X CTS	JONES MUELLER	E-2605SG EQUAL
③	1" "BLUE" PEX TUBING	MUNICIPEX	SDR9 (CTS)	⑪	1" BRASS F.I.P. X F.I.P. ELBOW		
④	1" ANGLE METER VALVE CTS X F.I.P.	MUELLER	B24274N	⑫	1" BRASS M.I.P. X M.I.P. NIPPLE (LENGTH VARIES)		
⑤	METER BOX	ARMORCAST	A6001946PC12	CONSTRUCTION NOTES:			
⑥	METER LID & COVER	A6001866DW & A6000481D		1. FOR CONNECTION TO STEEL MAIN, USE 4" FLANGED OUTLE AND 4" X 1" TAPPED BLIND FLANGE.			
⑦	1" AIR & VAC. VALVE WITH SCREEN	ARI INC.	D40 COMBO	2. WHEN THE SIDEWALK IS 5' WIDE OR LESS AND ADJACENT TO THE CURB, FIRE HYDRANTS, AIR RELEASE VALVE AND OTHER INSTALLATIONS THAT PROTRUDE ABOVE THE GROUND SHALL BE LOCATED BETWEEN PROPERTY LINE AND BACK OF SIDEWALK.			
⑧	ROUND ENCLOSURE	ARMORCAST	P6002003-SAND STONE	3. INSTALL #12 GAUGE TRACER WIRE ALONG WITH ALL PEX TUBING.			

1" AIR RELEASE ASSEMBLY

NOT TO SCALE

APPROVED BY:
ROY FRAUSTO
GENERAL MANAGER

DATE



DRAWING #
W-4

REVISION DATE:
MAY 2021

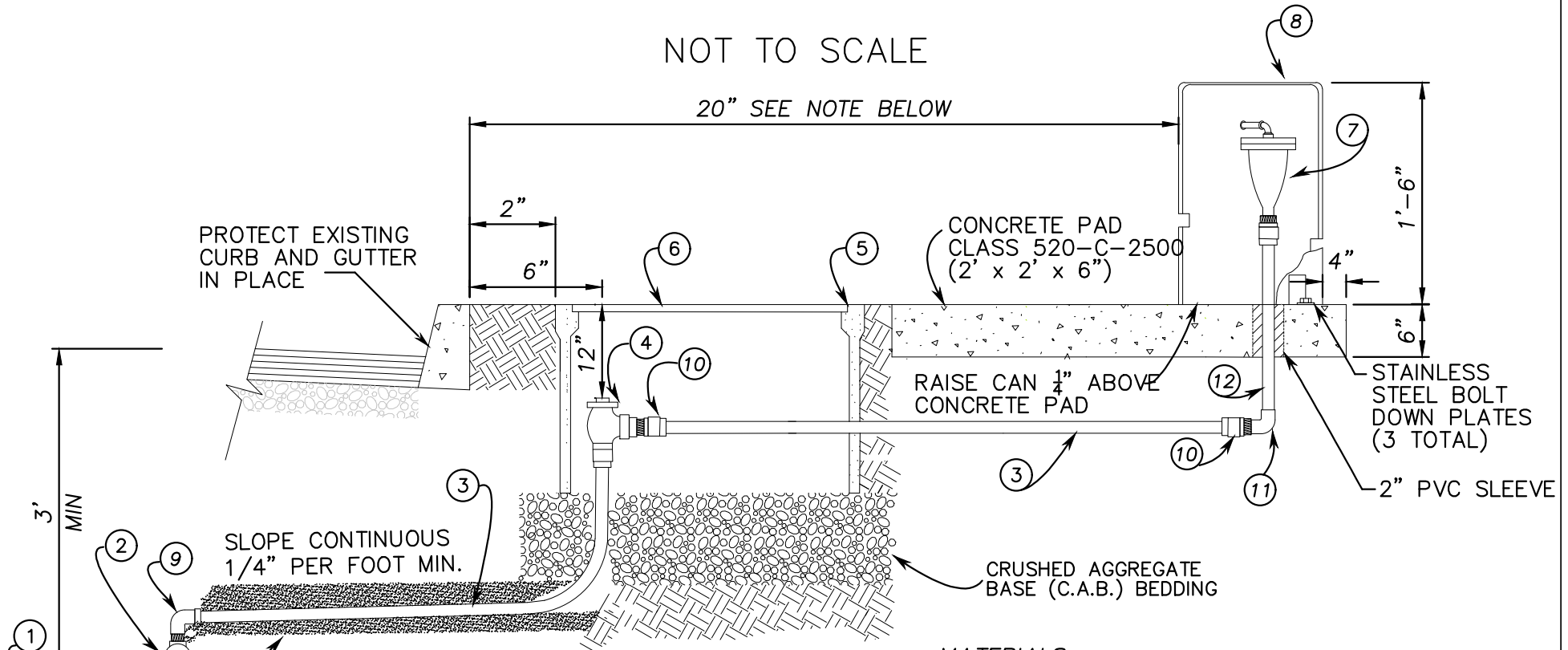
LA PUENTE VALLEY
COUNTY WATER DISTRICT

1" AIR RELEASE
ASSEMBLY

1
OF 1

NOT TO SCALE

20" SEE NOTE BELOW



PROTECT EXISTING CURB AND GUTTER IN PLACE

SLOPE CONTINUOUS 1/4" PER FOOT MIN.

SAND BEDDING ON OPEN TRENCH APPLICATION

CONCRETE PAD CLASS 520-C-2500 (2' x 2' x 6")

RAISE CAN 1/4" ABOVE CONCRETE PAD

CRUSHED AGGREGATE BASE (C.A.B.) BEDDING

STAINLESS STEEL BOLT DOWN PLATES (3 TOTAL)

2" PVC SLEEVE

MATERIALS

ITEM NO.	SIZE & DESCRIPTION	MANUF.	SPEC. NO.	ITEM NO.	SIZE & DESCRIPTION	MANUF.	SPEC. NO.
①	DOUBLE STRAP BRONZE SERVICE SADDLE 1" I.P. OUTLET	JONES MUELLER	J-979 EQUAL	⑨	1" 90 M.I.P. X CTS	JONES MUELLER	SE-2619SG EQUAL
②	1" BRONZE CORPORATION VALVE BALL TYPE M.I.P. X F.I.P.	JONES MUELLER	E-1931 EQUAL	⑩	1" STRAIGHT COUPLING M.I.P. X CTS	JONES MUELLER	E-2605S EQUAL
③	1" "PURPLE" PEX TUBING	MUNICIPEX	SDR9 (CTS)	⑪	1" BRASS F.I.P. X F.I.P. ELBOW		
④	1" ANGLE METER VALVE CTS X F.I.P.	MUELLER	B24274N	⑫	1" BRASS M.I.P. X M.I.P. NIPPLE (LENGTH VARIES)		
⑤	METER BOX	ARMORCAST	A6001946PC12	<u>CONSTRUCTION NOTES:</u>			
⑥	METER LID	A6001866DW & A6000481D		1.	FOR CONNECTION TO STEEL MAIN, USE 4" FLANGED OUTLET AND 4" X 1" TAPPED BLIND FLANGE.		
⑦	1" AIR & VAC. VALVE WITH SCREEN	ARI INC.	D40 COMBO	2.	WHEN THE SIDEWALK IS 5' WIDE OR LESS AND ADJACENT TO THE CURB, FIRE HYDRANTS, AIR RELEASE VALVE AND OTHER INSTALLATIONS THAT PROTRUDE ABOVE THE GROUND SHALL BE LOCATED BETWEEN PROPERTY LINE AND BACK OF SIDEWALK.		
⑧	ROUND ENCLOSURE	ARMORCAST	P6002003-SAND STONE	3.	INSTALL #12 GAUGE TRACER WIRE ALONG WITH ALL PEX TUBING.		

CONSTRUCTION NOTES:

- FOR CONNECTION TO STEEL MAIN, USE 4" FLANGED OUTLET AND 4" X 1" TAPPED BLIND FLANGE.
- WHEN THE SIDEWALK IS 5' WIDE OR LESS AND ADJACENT TO THE CURB, FIRE HYDRANTS, AIR RELEASE VALVE AND OTHER INSTALLATIONS THAT PROTRUDE ABOVE THE GROUND SHALL BE LOCATED BETWEEN PROPERTY LINE AND BACK OF SIDEWALK.
- INSTALL #12 GAUGE TRACER WIRE ALONG WITH ALL PEX TUBING.

1" RECYCLED AIR RELEASE ASSEMBLY

NOT TO SCALE

APPROVED BY:

ROY FRAUSTO
GENERAL MANAGER

DATE



DRAWING #

W-4R

REVISION DATE:

MAY
2021

LA PUENTE VALLEY
COUNTY WATER DISTRICT

1" RECYCLED AIR
RELEASE ASSEMBLY

1
OF 1

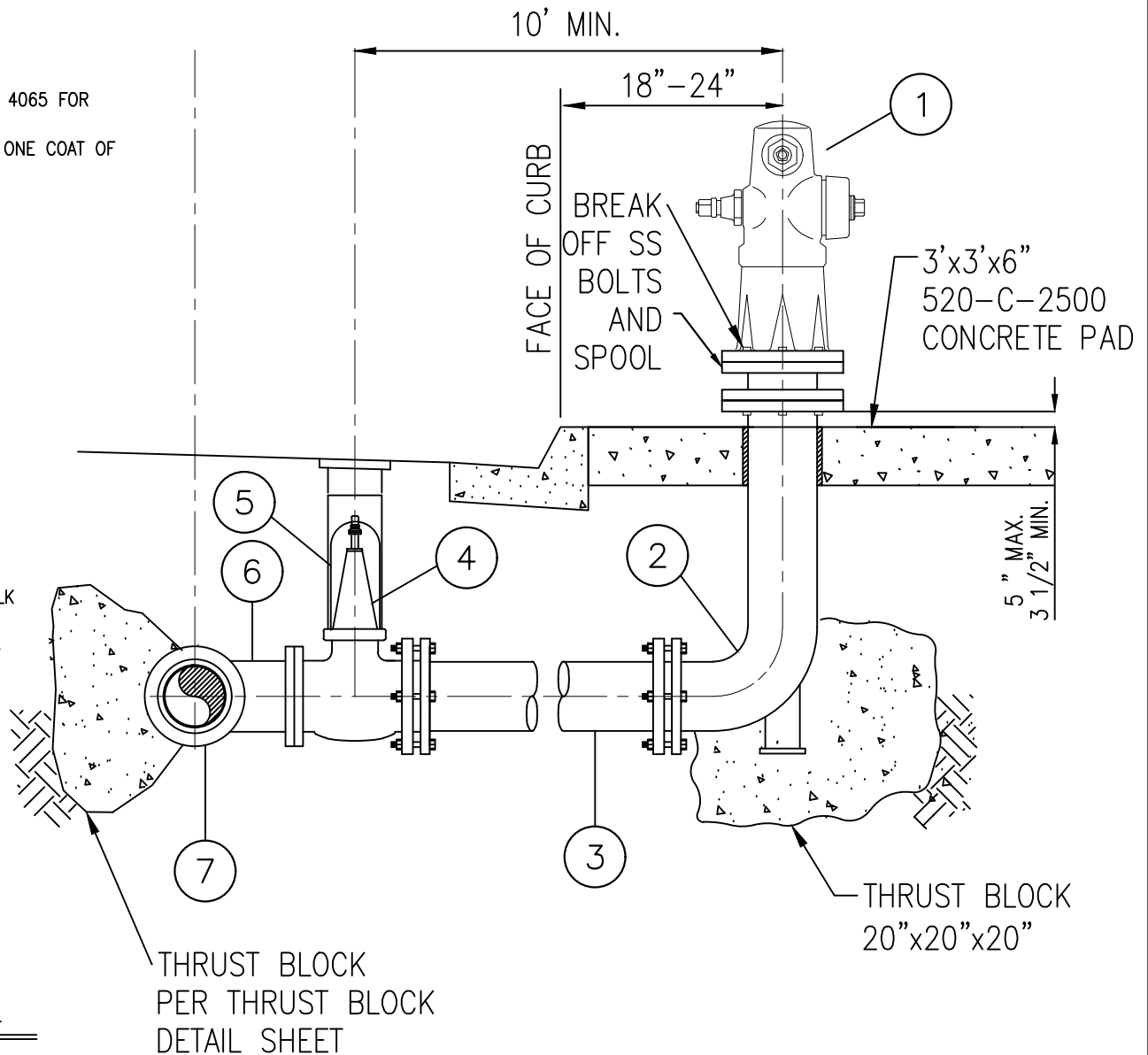
NOT TO SCALE

MATERIALS

- ① 6" FIRE HYDRANT (6 HOLE) JONES 4040 FOR RESIDENTIAL. JONES 4065 FOR COMMERCIAL/INDUSTRIAL APPLICATIONS. PAINT THE EXTERIOR W/ (2) COATS OF PRIMER RUST-OLEUM NO. 769 AND FINISH W/ ONE COAT OF SCHOOL BUS YELLOW, RUST-OLEUM NO. 659.
- ② 6" FLG x M.J. BURY ELBOW, 6H.
- ③ 6" DUCTILE IRON PIPE, CLASS 350.
- ④ 6" GATE VALVE - FLG x M.J., CLOW C509, MUELLER 2360 OR APPROVED EQUAL BY DISTRICT
- ⑤ 6" VALVE CAN AND COVER PER W-6 OR W-6A
- ⑥ 6" FLANGED OUTLET ON TEE.
- ⑦ X"xX"x6" DUCTILE IRON TEE, MJxMJxFLG.

CONSTRUCTION NOTES:

- 1. THE LOCATION OF HYDRANTS MUST MEET ALL OF THE FOLLOWING CONDITIONS:
 - A. MAINTAIN MINIMUM 18" DISTANCE FROM BACK OF CURB.
 - B. MAINTAIN MINIMUM 12" DISTANCE FROM EDGE OF SIDEWALK WHEN PLACED IN PARKWAY.
 - C. MAINTAIN 36" CLEAR DISTANCE FROM ANY OBSTRUCTIONS.
- 2. WHEN THE SIDEWALK IS 5' WIDE OR LESS AND ADJACENT TO THE CURB, FIRE HYDRANTS, AIR RELEASE VALVE AND OTHER INSTALLATIONS THAT PROTRUDE ABOVE THE GROUND SHALL BE LOCATED BETWEEN PROPERTY LINE AND BACK OF SIDEWALK.
- 3. AS REQUIRED, INSTALL CAST IRON SPOOL, FLANGED WITH STAINLESS STEEL #316 NUT AND BOLTS TO HYDRANT BURY.
- 4. ALL MECHANICAL JOINTS SHALL BE RESTRAINED WITH EBAA IRON MEGALUGS OR APPROVED EQUAL
- 5. ASSEMBLY SHALL COMPLY WITH ADA REGULATIONS.



FIRE HYDRANT ASSEMBLY DETAIL

NOT TO SCALE

APPROVED BY:
 ROY FRAUSTO
 GENERAL MANAGER

DATE



DRAWING #
 W-5

REVISION DATE:
 MAY
 2021

LA PUENTE VALLEY
 COUNTY WATER DISTRICT

6-INCH FIRE
 HYDRANT ASSEMBLY

1
 OF 1

NOT TO SCALE

ASPHALT PAVEMENT PER TYP. TRENCH DETAIL



6" CAST IRON COVER MARKED "WATER"

6"x1/4" SOLID DISK, TACK WELD TO SHAFT EXTENSION



PLAN

6" P.V.C. SDR. 35

ADAPT TO OPERATING NUT ON VALVE. FASTEN WITH PIN

BUTTERFLY OR RESILIENT WEDGE GATE VALVE

WATER MAIN

GALVANIZED SPLIT SLEEVE, 18 GA. x 12" LONG MIN.

2" SQ. OPERATING NUT,

VALVE STEM EXTENSION, 1-1/4" STEEL ROD CENTER AND PLUMB OVER OPERATING NUT

IF DEPTH EXCEEDS 4'-0" PROVIDE STEM EXTENSION TO 30" BELOW FINISHED SURFACE

VALVE BOX AND COVER DETAIL IN ASPHALT PAVEMENT

NOT TO SCALE

APPROVED BY:

ROY FRAUSTO
GENERAL MANAGER

DATE



DRAWING #

W-6

REVISION DATE:

MAY
2021

LA PUENTE VALLEY
COUNTY WATER DISTRICT

VALVE BOX AND COVER
IN ASPHALT PAVEMENT

1
OF 1

NOT TO SCALE

CONCRETE PAVEMENT



EISEL ENTERPRISES INC.
CAST IRON COVER W106C
MARKED "WATER"

12"
MIN.

EISEL ENTERPRISES INC.
W10VB VALVE BOX

6"x1/4" SOLID DISK,
TACK WELD TO
SHAFT EXTENSION

2" SQ. OPERATING NUT,

PLAN

6" P.V.C. SDR. 35

VALVE STEM EXTENSION,
1-1/4" STEEL ROD CENTER
AND PLUMB OVER OPERATING
NUT

IF DEPTH EXCEEDS 4'-0"
PROVIDE STEM EXTENSION
TO 30" BELOW FINISHED SURFACE

ADAPT TO OPERATING
NUT ON VALVE. FASTEN
WITH PIN

BUTTERFLY OR RESILIENT
WEDGE GATE VALVE

VALVE BOX AND COVER DETAIL
IN CONCRETE PAVEMENT

WATER MAIN

SEE THRUST BLOCK STANDARD DETAIL

NOT TO SCALE

APPROVED BY:

ROY FRAUSTO
GENERAL MANAGER

DATE



DRAWING #

W-6A

REVISION DATE:

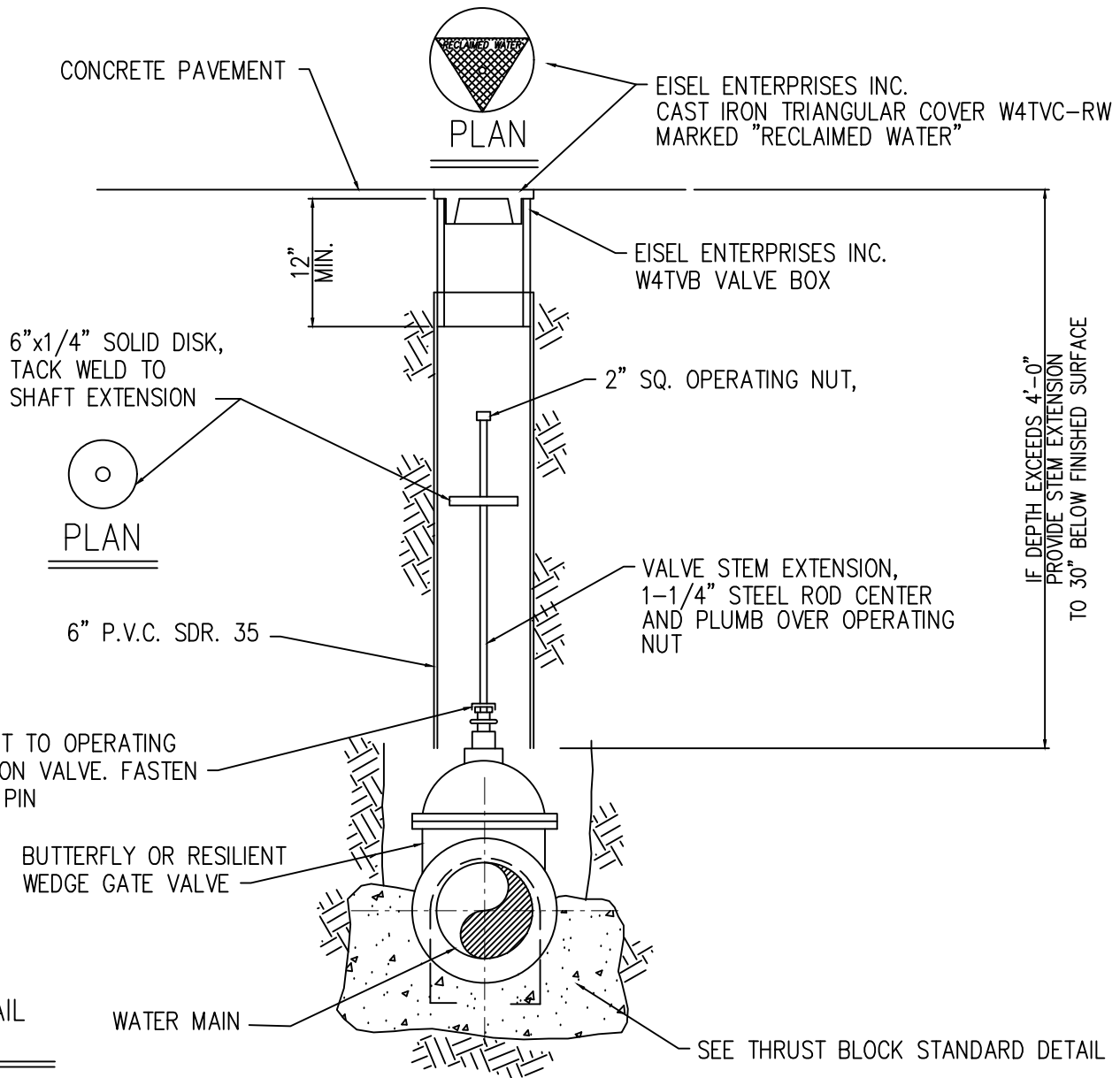
MAY
2021

LA PUENTE VALLEY
COUNTY WATER DISTRICT

VALVE BOX AND COVER
IN CONCRETE PAVEMENT

1
OF 1

NOT TO SCALE



VALVE BOX AND COVER DETAIL FOR RECYCLED WATER

NOT TO SCALE

APPROVED BY:

ROY FRAUSTO
GENERAL MANAGER

DATE



DRAWING #

W-6R

REVISION DATE:

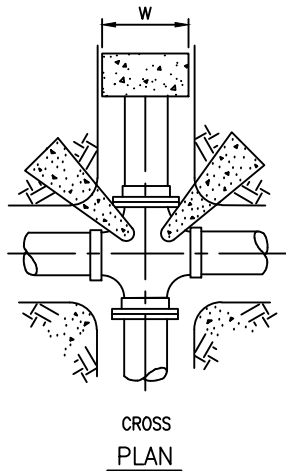
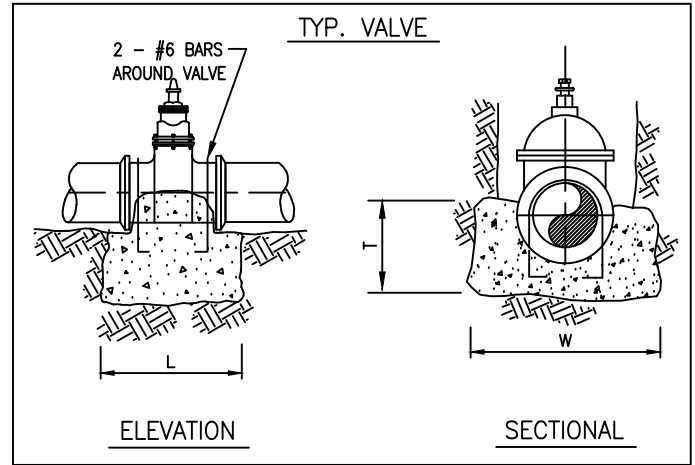
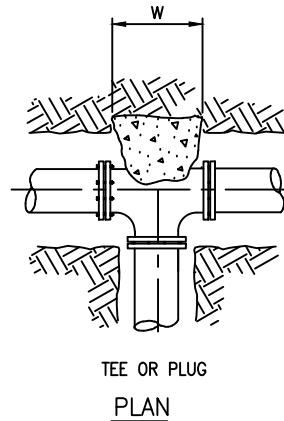
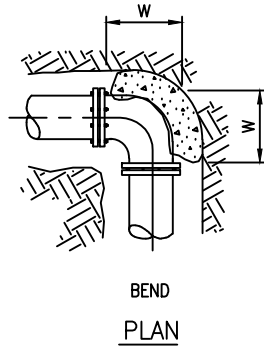
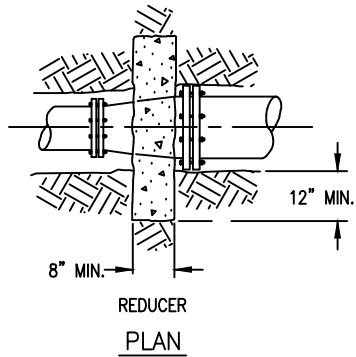
MAY
2021

LA PUENTE VALLEY
COUNTY WATER DISTRICT

VALVE BOX AND COVER
FOR RECYCLED WATER

1
OF 1

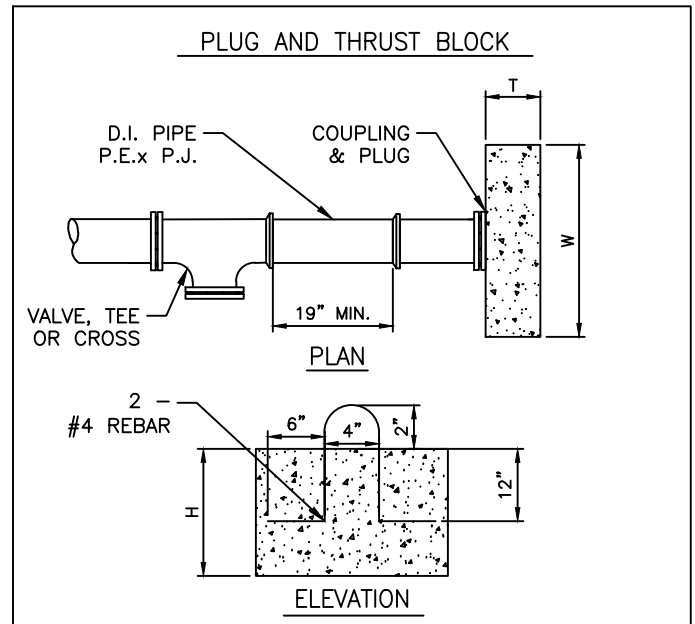
NOT TO SCALE



VALVE AND PIPE SIZE	(L) LENGTH	(W) WIDTH	(T) THICKNESS
6"	2'	2'-0"	12"
8"	3'	2'-2"	14"
10"	3'	2'-4"	14"
12"	4'	2'-6"	15"
14"	5'	3'-0"	20"
16"	6'	3'-6"	24"

NOTES:

1. THRUST BLOCKS MUST BEAR ON UNDISTURBED SOIL.
2. CONCRETE FOR THRUST & ANCHOR BLOCKS SHALL BE OF CLASS 480-C-2000 IN ACCORDANCE WITH S.S.P.W.C. IT SHALL BE POURED (12" THICK MIN.) AGAINST UNDISTURBED SOIL. P.C.C. SHALL BE KEPT CLEAR OF PIPE & BELL OF THE FITTINGS.
3. WHEN MECHANICAL JOINTS ARE UTILIZED, SET FORMS TO SEPARATE BOLTS FROM P.C.C. TO ASSURE ACCESS TO BOLTS & JOINTS.
4. TEST PRESSURE IN THE PIPE SHALL BE 150 PSI.



CONCRETE THRUST BLOCK DETAIL
NOT TO SCALE

APPROVED BY:

ROY FRAUSTO
GENERAL MANAGER

DATE

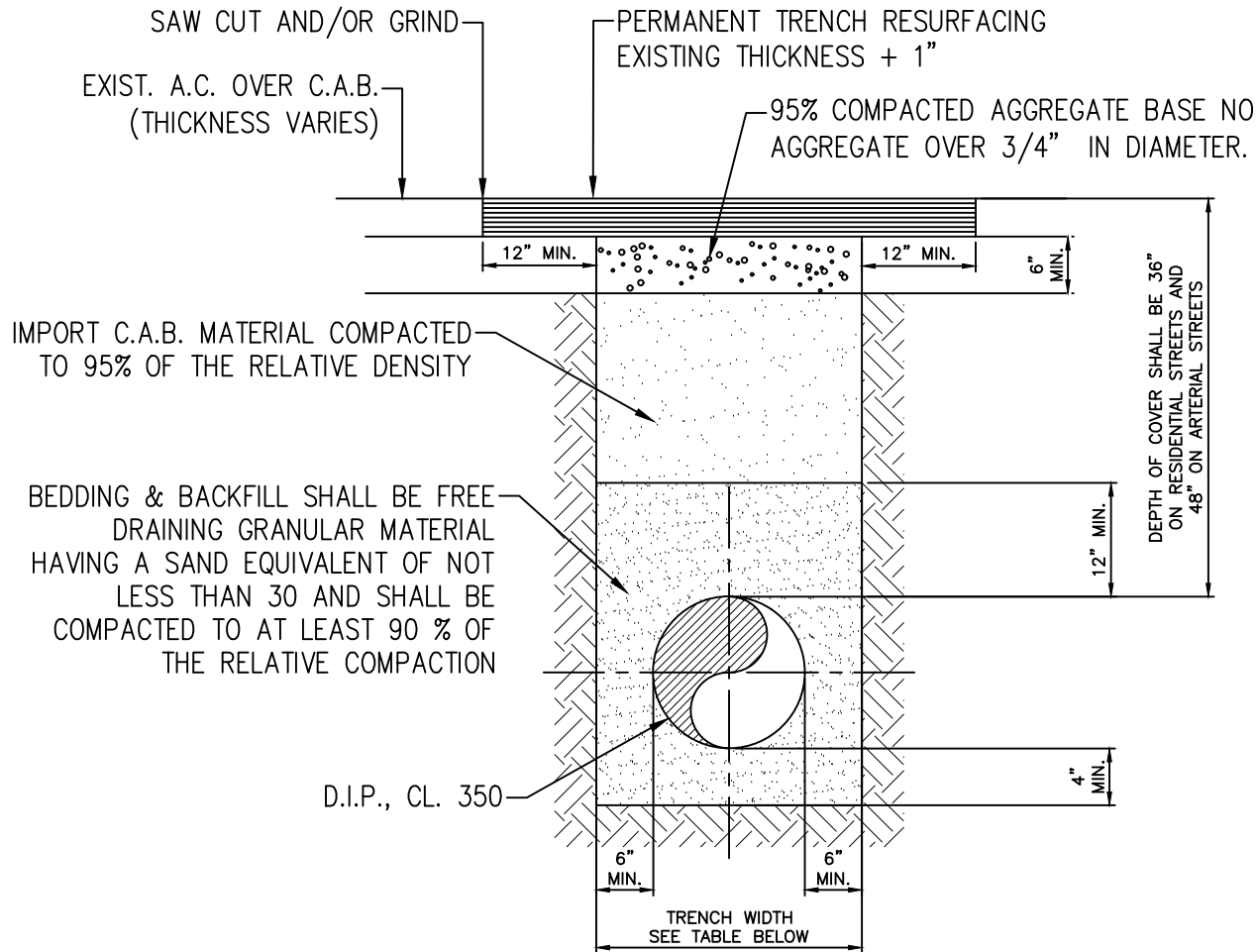


DRAWING #
W-7
REVISION DATE:
MAY
2021

LA PUENTE VALLEY
COUNTY WATER DISTRICT

CONCRETE THRUST
BLOCKS

NOT TO SCALE



PIPE SIZE	4"	6"	8"	10"	12"	16"	20"	24"	30"
MAXIMUM ALLOWED TRENCH WIDTH	20"	20"	20"	22"	24"	28"	32"	36"	42"

NOTES:

- PERMANENT TRENCH RESURFACING SHALL CONSIST OF AN ASPHALT CONCRETE SURFACE COURSE OF TYPE C2-AR-4000 1½" THICK PLACED ON AN ASPHALT CONCRETE BASE OF TYPE B-AR-4000
- SAW CUTS SHALL BE 1½" DEEP. IF THE SAW CUT IS WITHIN 3' OF A PREVIOUS PARALLEL SAW CUT OF 3' OR GREATER IN LENGTH OR A CONCRETE EDGE, THE EXISTING PAVEMENT SHALL BE REMOVED TO SAID SAW CUT OR CONCRETE EDGE, UNLESS OTHERWISE APPROVED BY THE ENGINEER.
- THE WIDTH OF P.C.C. PAVEMENT REPLACEMENT SHALL BE A MINIMUM OF 10' WIDE AN/OR TO THE NEAREST CONSTRUCTION JOINT WITH #4 DOWELS EPOXIED @ 12" O.C.
- ANY TUNNELING UNDER EXISTING CURB AND GUTTER OR CROSS GUTTER SHALL REQUIRE A SLURRY BACKFILL TO THE SATISFACTION OF THE INSPECTOR.

TYPICAL TRENCH DETAIL

APPROVED BY:
 ROY FRAUSTO
 GENERAL MANAGER

DATE



DRAWING #
 W-8

REVISION DATE:
 MAY
 2021

LA PUENTE VALLEY
 COUNTY WATER DISTRICT

TYPICAL TRENCH
 DETAIL

ITEM NO.	MATERIALS
----------	-----------

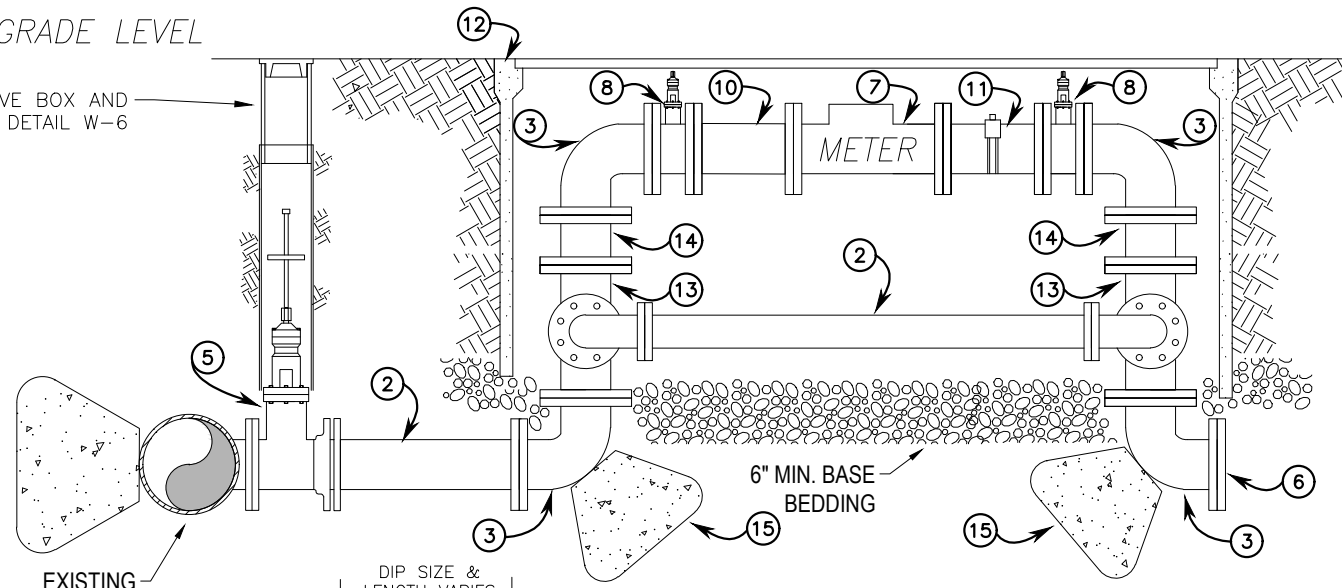
- | | |
|---|--|
| ① | TRANSITION COUPLING |
| ② | CLASS 350 DIP (LENGTH VARIES) |
| ③ | 90 FLG X FLG BEND |
| ④ | TEE FLG X MJ |
| ⑤ | FLG X MJ GATE VALVE |
| ⑥ | BLIND FLANGE |
| ⑦ | OCTAVE METER |
| ⑧ | FLG X FLG GATE VALVE |
| ⑨ | 90 FLG DIP BENDS |
| ⑩ | 2X DIAMETER SIZE SPOOL |
| ⑪ | 2X DIAMETER SIZE SPOOL W/
2" SERVICE SADDLE |
| ⑫ | ARMORCAST POLYMER CONCRETE
VAULT W/TORSION ASSIST COVER |
| ⑬ | TEE FLG X FLG |
| ⑭ | SPOOL FLG X FLG |
| ⑮ | THRUST BLOCK (SIZE VARIES) |

HEIGHT VARIES

WIDTH VARIES

GRADE LEVEL

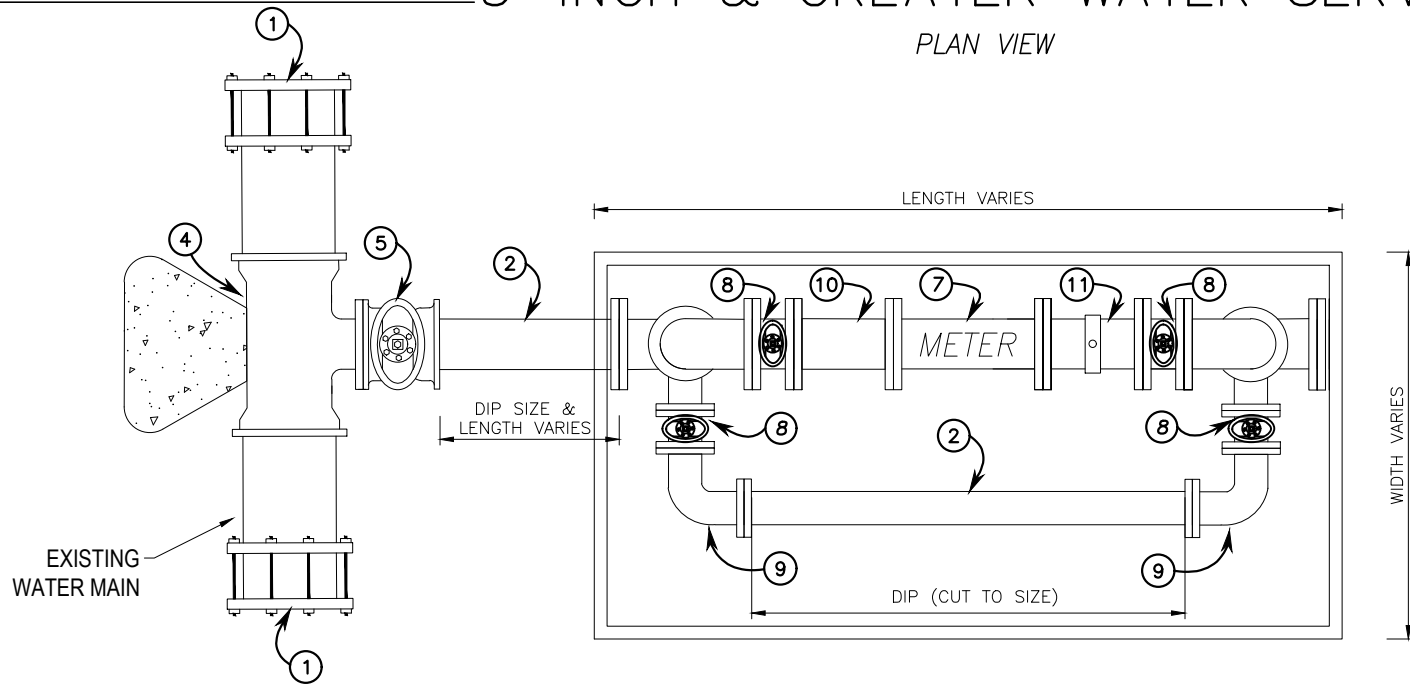
SEE VALVE BOX AND COVER DETAIL W-6



SECTION VIEW

3-INCH & GREATER WATER SERVICE

PLAN VIEW

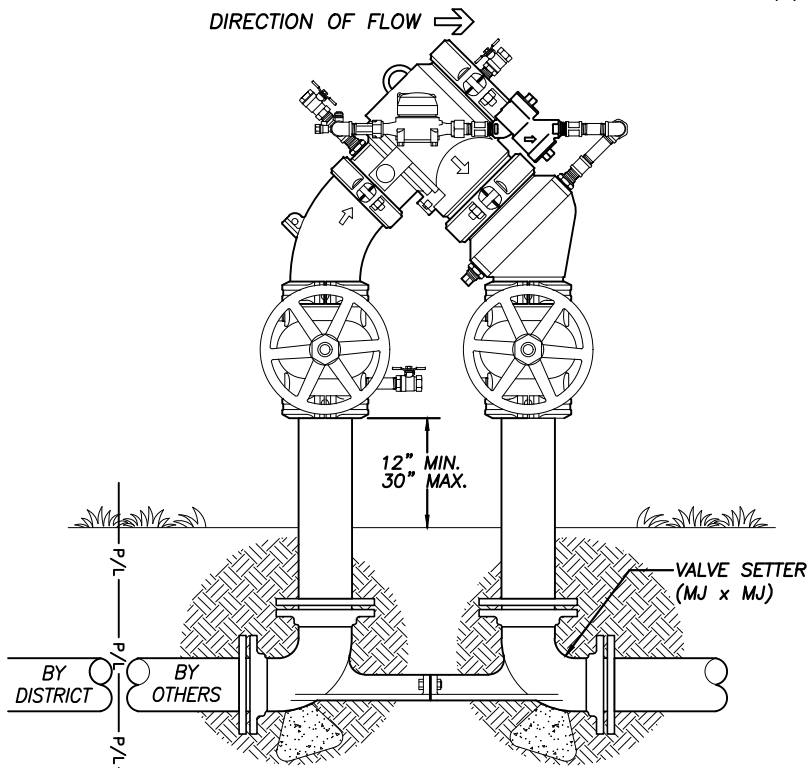


CONSTRUCTION NOTES:

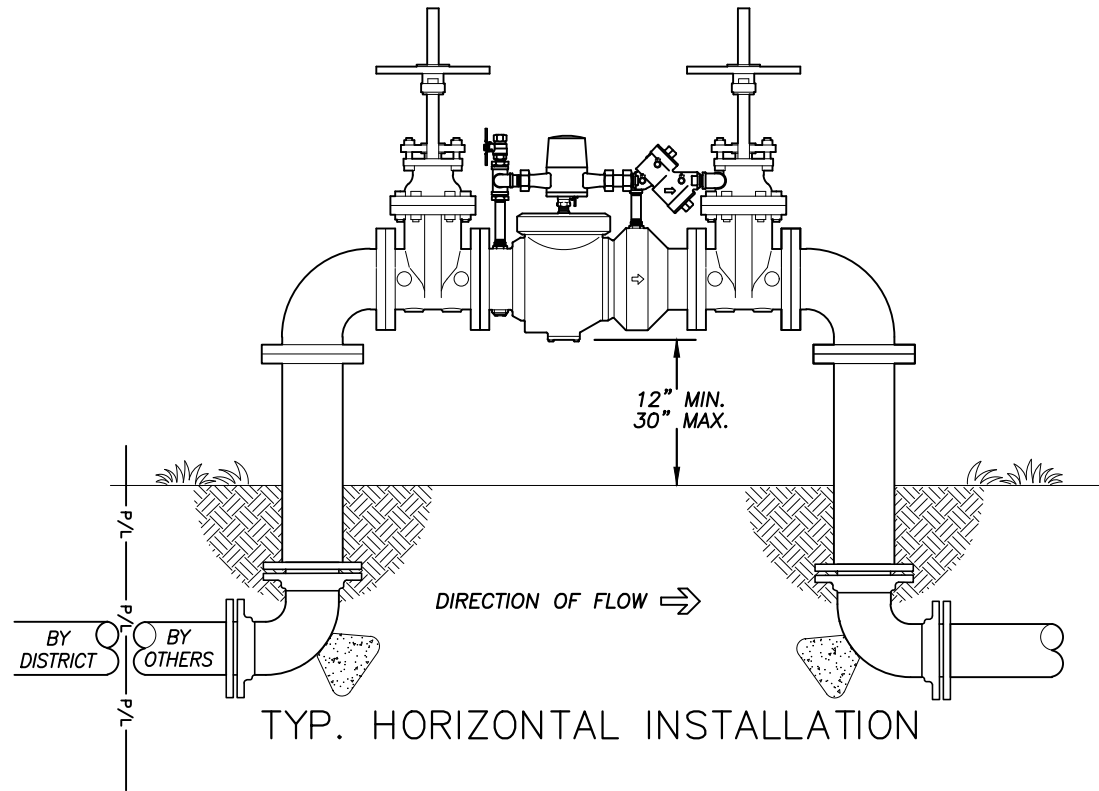
1. TEE CUT IN SHALL NOT BE INSTALLED WITHIN 24" OF VALVE, COUPLING, JOINT OR FITTING.
2. THE WATER SERVICE SHALL EXTEND PERPENDICULAR TO THE CENTERLINE UNLESS OFFSETS ARE REQUIRED.
3. ALL VAULTS SHALL BE ORDERED SPECIFIC TO ACCOMMODATE JOB SPECIFIC INSTALLATION CONSTRAINTS. ALL VAULTS WILL BE EQUIPPED WITH TORSION ASSIST LIDS.
4. ALL COMMERCIAL, INDUSTRIAL AND IRRIGATION METER SERVICES WILL REQUIRE A DISTRICT APPROVED BACKFLOW PROTECTION DEVICE.
5. BUTTERFLY VALVES CAN BE USED AS AN OPTION WHEN DEPTH IS A CONSTRAINT.
6. EXPOSED PIPING WITHIN THE VAULT SHALL BE CEMENT MORTAR LINED AND EPOXY COATED.



NOT TO SCALE



TYP. VERTICAL INSTALLATION



TYP. HORIZONTAL INSTALLATION

CONSTRUCTION NOTES:

1. THE ASSEMBLY SHALL BE LOCATED AS CLOSE AS PRACTICAL TO THE PROPERTY LINE WITHIN THE CUSTOMER'S PROPERTY. LA PUENTE VALLEY COUNTY WATER DISTRICT HAS JURISDICTION OVER THE INSTALLATION LOCATION OF THE DCDA.
2. PROTECTIVE LOCKABLE ENCLOSURE REQUIRED ON ASSEMBLIES 2" AND SMALLER. MUST MEET CLEARANCE, ACCESS AND DRAINAGE REQUIREMENTS.
3. THERE SHALL BE NO VALVE, TAP, TEE OR SERVICE CONNECTION BETWEEN THE POINT OF CONNECTION AND THE ASSEMBLY.
4. MINIMUM OF 12" CLEARANCE FOR TEST COCKS, AND MINIMUM 12" TO A MAXIMUM OF 30" CLEARANCE FROM THE FIRST COMPONENT OF THE ASSEMBLY TO THE GROUND.
5. THE ASSEMBLY MUST BE A USC APPROVED BACKFLOW PREVENTION DEVICE AND MUST BE ACCESSIBLE FOR TESTING AND REPAIR.
6. THE ASSEMBLY MUST BE TESTED BY A CERTIFIED BACKFLOW PREVENTION TESTER WITHIN 30 DAYS OF THE INSTALL DATE AND ANNUALLY THEREAFTER.
7. ANY DEVIATION FROM THE METHOD DESCRIBED ABOVE MUST RECEIVE WRITTEN APPROVAL FROM THE DISTRICT PRIOR TO INSTALLATION.
8. BELOW GRADE ELBOWS SHALL BE RESTRAINED MECHANICAL JOINTS WITH THRUST BLOCKS (TYP)

DOUBLE CHECK DETECTOR ASSEMBLY

APPROVED BY:

ROY FRAUSTO
GENERAL MANAGER

DATE



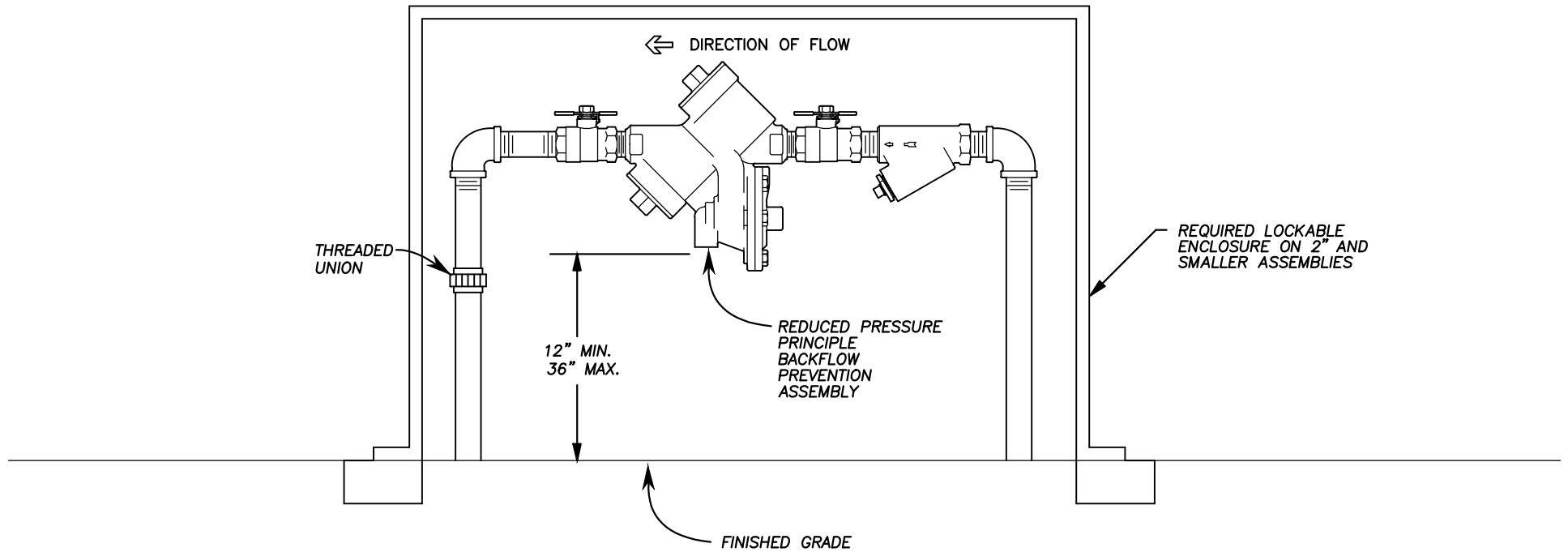
DRAWING #
W-10

REVISION DATE:
MAY 2021

LA PUENTE VALLEY
COUNTY WATER DISTRICT

DOUBLE CHECK DETECTOR
ASSEMBLY BACKFLOW
DETAIL

NOT TO SCALE



CONSTRUCTION NOTES:

1. THE ASSEMBLY SHALL BE LOCATED AS CLOSE AS PRACTICAL TO THE WATER METER WITHIN CUSTOMER'S PROPERTY. ALLOW SUFFICIENT ROOM BETWEEN ASSEMBLY AND PROPERTY LINE FOR INSTALLATION OF LOCKABLE ENCLOSURE.
2. LOCKABLE ENCLOSURE REQUIRED ON ASSEMBLIES 2" AND SMALLER. ENCLOSURE MUST MEET CLEARANCE, ACCESS AND DRAINAGE REQUIREMENTS.
3. THERE SHALL BE NO VALVE, TAP, TEE OR SERVICE CONNECTION BETWEEN THE METER AND THE ASSEMBLY.
4. MINIMUM OF 12" CLEARANCE FOR TEST COCKS, AND MINIMUM 12" TO A MAXIMUM OF 36" CLEARANCE FROM BOTTOM OF THE RELIEF VALVE TO GROUND.
5. ASSEMBLY TYPE AND LOCATION REQUIRES APPROVAL BY LA PUENTE VALLEY COUNTY WATER DISTRICT PRIOR TO INSTALLATION. ASSEMBLY MUST BE ACCESSIBLE FOR TESTING AND REPAIR.
6. THE ASSEMBLY MUST BE TESTED BY A CERTIFIED BACKFLOW PREVENTION TESTER WITHIN 30 DAYS OF THE INSTALL DATE AND ANNUALLY THEREAFTER.
7. ANY DEVIATION FROM THE METHOD DESCRIBED ABOVE MUST RECEIVE WRITTEN APPROVAL FROM THE DISTRICT PRIOR TO INSTALLATION.

REDUCED PRESSURE PRINCIPLE BACKFLOW PREVENTION ASSEMBLY

APPROVED BY:

ROY FRAUSTO
GENERAL MANAGER

DATE



DRAWING #
W-11

REVISION DATE:
MAY 2021

LA PUENTE VALLEY
COUNTY WATER DISTRICT

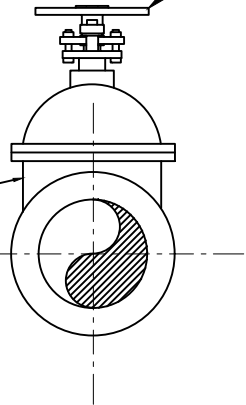
REDUCED PRESSURE PRINCIPLE
BACKFLOW DETAIL

NOT TO SCALE

NOTE: USE GATE VALVES FOR PIPES 12" AND SMALLER. USE BUTTERFLY VALVES FOR PIPES LARGER THAN 12".

HANDWHEEL

C509 RESILIENT WEDGE GATE VALVE
MUELLER A-2362, 350 PSI
GATE VALVE W/ HANDWHEEL
OR APPROVED EQUAL

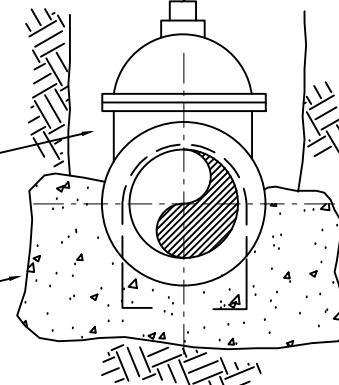


ABOVE GROUND GATE VALVE APPLICATIONS

NOT TO SCALE

2" WRENCH NUT

C509 RESILIENT WEDGE GATE VALVE
MUELLER A-2362, 350 PSI
GATE VALVE W/ 2" WRENCH NUT
OR APPROVED EQUAL



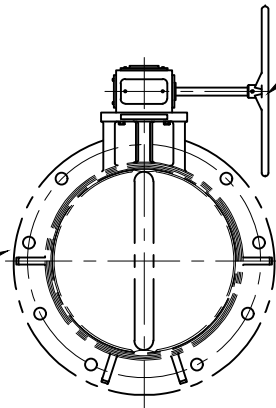
SEE THRUST BLOCK STANDARD DETAIL

BURIED GATE VALVE APPLICATIONS

NOT TO SCALE

HANDWHEEL

C504 RESILIENT BUTTERFLY VALVE
PRATT GA-11864, CLASS 150
W/ MANUAL HAND WHEEL
OR APPROVED EQUAL

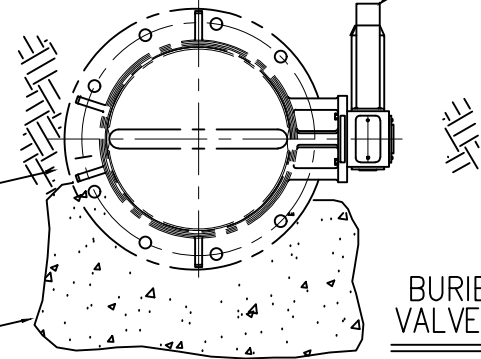


ABOVE GROUND BUTTERFLY VALVE APPLICATIONS

NOT TO SCALE

2" WRENCH NUT

C504 RESILIENT BUTTERFLY VALVE
PRATT GA-11444, CLASS 150
W/ 2" WRENCH NUT
OR APPROVED EQUAL



SEE THRUST BLOCK STANDARD DETAIL

BURIED BUTTERFLY VALVE APPLICATIONS

NOT TO SCALE

APPROVED BY:

ROY FRAUSTO
GENERAL MANAGER

DATE



DRAWING #

W-12

REVISION DATE:

MAY
2021

LA PUENTE VALLEY
COUNTY WATER DISTRICT

GATE AND BUTTERFLY
VALVE STANDARD DETAIL

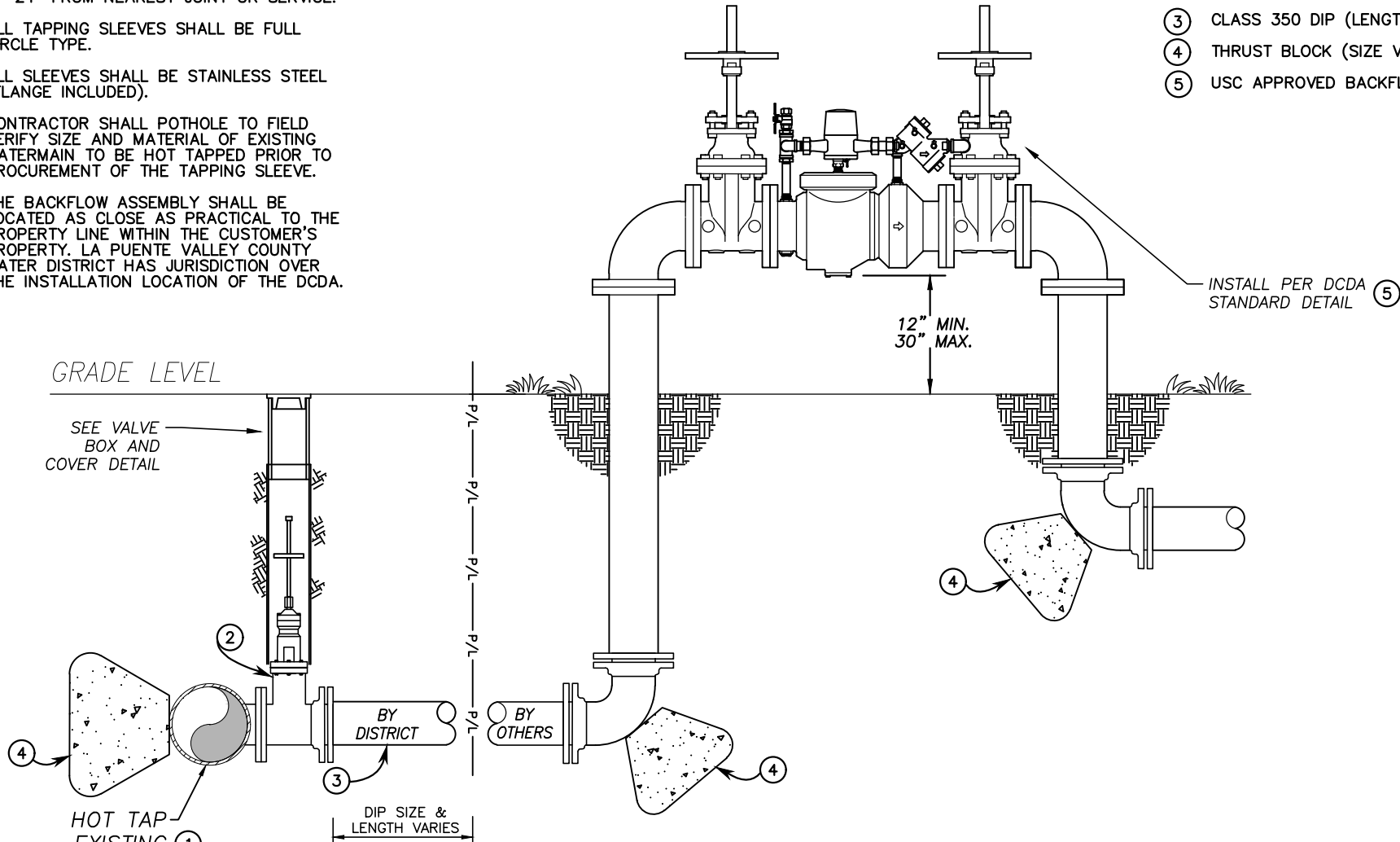
1
OF 1

NOT TO SCALE

CONSTRUCTION NOTES:

1. THE WATER SERVICE SHALL EXTEND PERPENDICULAR TO THE CENTERLINE UNLESS OFFSETS ARE REQUIRED.
2. ALL TAPPING SLEEVES MUST BE A MINIMUM OF 24" FROM NEAREST JOINT OR SERVICE.
3. ALL TAPPING SLEEVES SHALL BE FULL CIRCLE TYPE.
4. ALL SLEEVES SHALL BE STAINLESS STEEL (FLANGE INCLUDED).
5. CONTRACTOR SHALL POT HOLE TO FIELD VERIFY SIZE AND MATERIAL OF EXISTING WATERMAIN TO BE HOT TAPPED PRIOR TO PROCUREMENT OF THE TAPPING SLEEVE.
6. THE BACKFLOW ASSEMBLY SHALL BE LOCATED AS CLOSE AS PRACTICAL TO THE PROPERTY LINE WITHIN THE CUSTOMER'S PROPERTY. LA PUENTE VALLEY COUNTY WATER DISTRICT HAS JURISDICTION OVER THE INSTALLATION LOCATION OF THE DCDA.

ITEM NO.	MATERIALS
①	FULL CIRCUMFERENCE, STAINLESS STEEL TAPPING SLEEVE (SMITH BLAIR 665 OR EQUAL)
②	RESILIENT WEDGE TAPPING VALVE FLG X MJ
③	CLASS 350 DIP (LENGTH VARIES)
④	THRUST BLOCK (SIZE VARIES)
⑤	USC APPROVED BACKFLOW



3-INCH & GREATER FIRE SERVICE

ROY FRAUSTO
GENERAL MANAGER

DATE



DRAWING #
W-13

REVISION DATE
MAY 2021

LA PUENTE VALLEY
COUNTY WATER DISTRICT

3-INCH AND GREATER
FIRE SERVICE DETAIL